

Datasheet for ABIN7252783

anti-SEC11A antibody

2 Images

[Go to Product page](#)

Overview

Quantity:	200 µL
Target:	SEC11A
Reactivity:	Human, Mouse, Rat
Host:	Rabbit
Clonality:	Polyclonal
Conjugate:	This SEC11A antibody is un-conjugated
Application:	Western Blotting (WB), ELISA, Immunohistochemistry (IHC)

Product Details

Immunogen:	Fusion protein of human SEC11A
Isotype:	IgG
Characteristics:	Polyclonal Antibody
Purification:	Antigen affinity purification

Target Details

Target:	SEC11A
Alternative Name:	SEC11A (SEC11A Products)
Background:	This gene encodes a member of the peptidase S26B family. The encoded protein is an 18 kDa subunit of the signal peptidase complex and has been linked to cell migration and invasion, gastric cancer and lymph node metastasis. Alternative splicing results in multiple transcript variants. A related pseudogene has been identified on chromosome 8.

Target Details

Molecular Weight:	Observed_MW: Refer to figures
	Calculated_MW: 21 kDa
UniProt:	P67812
Pathways:	Peptide Hormone Metabolism

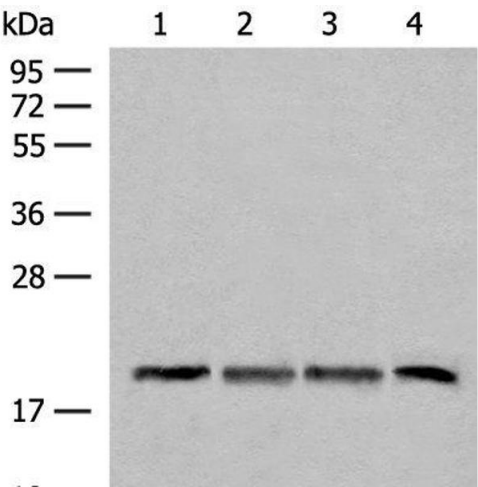
Application Details

Application Notes:	WB 1:500-1:2000, IHC 1:40-1:200, ELISA 1:5000-1:10000
Restrictions:	For Research Use only

Handling

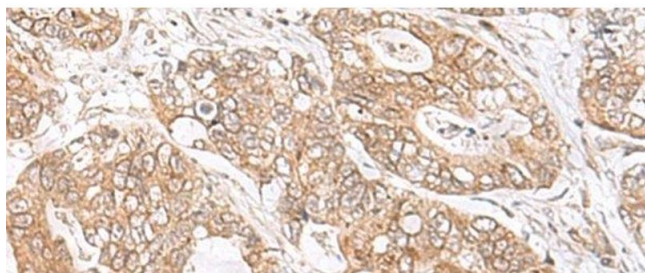
Format:	Liquid
Concentration:	0.78 mg/mL
Buffer:	PBS with 0.05 % Sodium azide and 40 % Glycerol, pH 7.4
Preservative:	Sodium azide
Precaution of Use:	This product contains Sodium azide: a POISONOUS AND HAZARDOUS SUBSTANCE which should be handled by trained staff only.
Storage:	-20 °C
Storage Comment:	Store at -20°C. Avoid freeze / thaw cycles.

Images



Western Blotting

Image 1. Western blot analysis of TM4 HEPG2 and A549 cell Mouse liver tissue lysates using SEC11A Polyclonal Antibody at dilution of 1:300



Immunohistochemistry (Paraffin-embedded Sections)

Image 2. Immunohistochemistry of paraffin-embedded Human gastric cancer tissue using SEC11A Polyclonal Antibody at dilution of 1:45(x200)