

Datasheet for ABIN7252807

anti-NXNL1 antibody**2** Images[Go to Product page](#)

Overview

Quantity:	200 µL
Target:	NXNL1
Reactivity:	Human
Host:	Rabbit
Clonality:	Polyclonal
Conjugate:	This NXNL1 antibody is un-conjugated
Application:	ELISA, Immunohistochemistry (IHC)

Product Details

Immunogen:	Fusion protein of human NXNL1
Isotype:	IgG
Characteristics:	Polyclonal Antibody
Purification:	Antigen affinity purification

Target Details

Target:	NXNL1
Alternative Name:	NXNL1 (NXNL1 Products)
Background:	Retinitis pigmentosa (RP) is a disease that leads to blindness by degeneration of cone photoreceptors. Rods produce factors required for cone viability. The protein encoded by this gene is one of those factors and is similar to a truncated form of thioredoxin. This gene has been proposed to have therapeutic value against RP.

Target Details

UniProt: [Q96CM4](#)

Application Details

Application Notes: IHC 1:30-1:150, ELISA 1:5000-1:10000

Restrictions: For Research Use only

Handling

Format: Liquid

Concentration: 0.78 mg/mL

Buffer: PBS with 0.05 % Sodium azide and 40 % Glycerol, pH 7.4

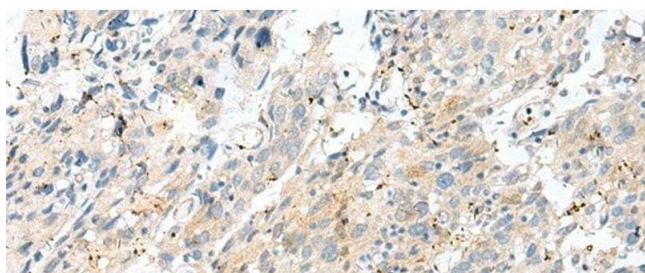
Preservative: Sodium azide

Precaution of Use: This product contains Sodium azide: a POISONOUS AND HAZARDOUS SUBSTANCE which should be handled by trained staff only.

Storage: -20 °C

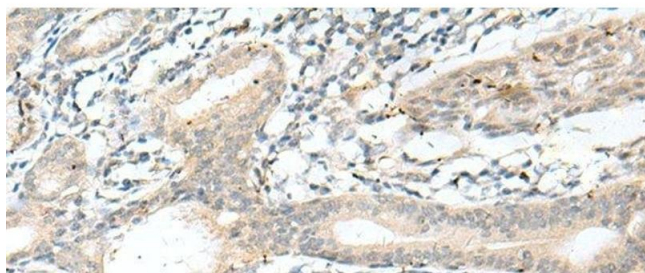
Storage Comment: Store at -20°C. Avoid freeze / thaw cycles.

Images



Immunohistochemistry (Paraffin-embedded Sections)

Image 1. Immunohistochemistry of paraffin-embedded Human cervical cancer tissue using NXNL1 Polyclonal Antibody at dilution of 1:45(x200)



Immunohistochemistry (Paraffin-embedded Sections)

Image 2. Immunohistochemistry of paraffin-embedded Human esophagus cancer tissue using NXNL1 Polyclonal Antibody at dilution of 1:45(x200)