

Datasheet for ABIN7252813

anti-QDPR antibody

3 Images

[Go to Product page](#)

Overview

Quantity:	200 µL
Target:	QDPR
Reactivity:	Human, Mouse, Rat
Host:	Rabbit
Clonality:	Polyclonal
Conjugate:	This QDPR antibody is un-conjugated
Application:	Western Blotting (WB), ELISA, Immunohistochemistry (IHC)

Product Details

Immunogen:	Fusion protein of human QDPR
Isotype:	IgG
Characteristics:	Polyclonal Antibody
Purification:	Antigen affinity purification

Target Details

Target:	QDPR
Alternative Name:	QDPR (QDPR Products)
Background:	This gene encodes the enzyme dihydropteridine reductase, which catalyzes the NADH-mediated reduction of quinonoid dihydrobiopterin. This enzyme is an essential component of the pterin-dependent aromatic amino acid hydroxylating systems. Mutations in this gene resulting in QDPR deficiency include aberrant splicing, amino acid substitutions, insertions, or

Target Details

premature terminations. Dihydropteridine reductase deficiency presents as atypical phenylketonuria due to insufficient production of bipterin, a cofactor for phenylalanine hydroxylase.

Molecular Weight: Observed_MW: Refer to figures
Calculated_MW: 26 kDa

UniProt: [P09417](#)

Application Details

Application Notes: WB 1:500-1:2000, IHC 1:50-1:200, ELISA 1:5000-1:10000

Restrictions: For Research Use only

Handling

Format: Liquid

Concentration: 1.2 mg/mL

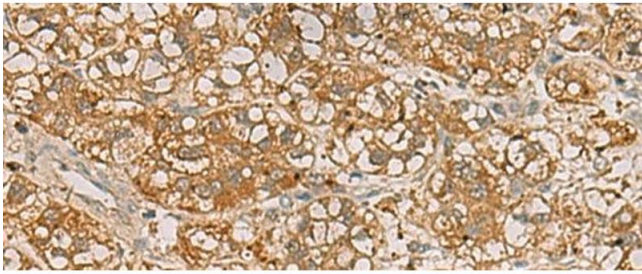
Buffer: PBS with 0.05 % Sodium azide and 40 % Glycerol, pH 7.4

Preservative: Sodium azide

Precaution of Use: This product contains Sodium azide: a POISONOUS AND HAZARDOUS SUBSTANCE which should be handled by trained staff only.

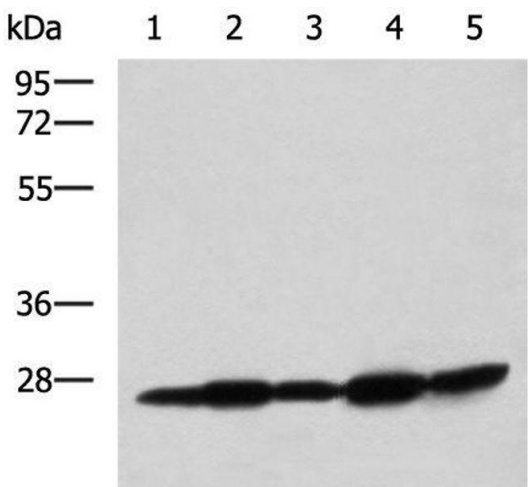
Storage: -20 °C

Storage Comment: Store at -20°C. Avoid freeze / thaw cycles.



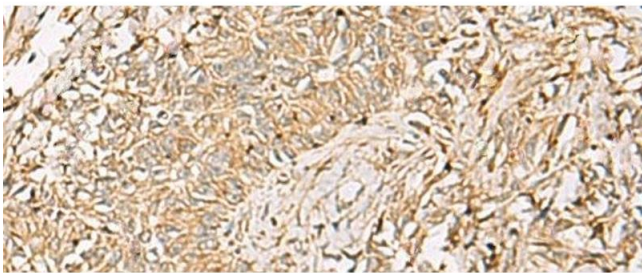
Immunohistochemistry (Paraffin-embedded Sections)

Image 1. Immunohistochemistry of paraffin-embedded Human liver cancer tissue using QDPR Polyclonal Antibody at dilution of 1:70(x200)



Western Blotting

Image 2. Western blot analysis of Mouse liver tissue Mouse brain tissue Rat brain tissue Rat liver tissue and Human fetal liver tissue lysates using QDPR Polyclonal Antibody at dilution of 1:800



Immunohistochemistry (Paraffin-embedded Sections)

Image 3. Immunohistochemistry of paraffin-embedded Human ovarian cancer tissue using QDPR Polyclonal Antibody at dilution of 1:70(x200)