

Datasheet for ABIN7252828
anti-HLA-DPB1 antibody[Go to Product page](#)

2 Images

Overview

Quantity:	200 µL
Target:	HLA-DPB1
Reactivity:	Human
Host:	Rabbit
Clonality:	Polyclonal
Conjugate:	This HLA-DPB1 antibody is un-conjugated
Application:	Western Blotting (WB), Immunohistochemistry (IHC), ELISA

Product Details

Immunogen:	Fusion protein of human HLA-DPB1
Isotype:	IgG
Characteristics:	Polyclonal Antibody
Purification:	Antigen affinity purification

Target Details

Target:	HLA-DPB1
Alternative Name:	HLA-DPB1 (HLA-DPB1 Products)
Background:	HLA-DPB belongs to the HLA class II beta chain paralogues. This class II molecule is a heterodimer consisting of an alpha (DPA) and a beta chain (DPB), both anchored in the membrane. It plays a central role in the immune system by presenting peptides derived from extracellular proteins. Class II molecules are expressed in antigen presenting cells (APC: B

Target Details

lymphocytes, dendritic cells, macrophages). The beta chain is approximately 26-28 kDa and its gene contains 6 exons. Exon one encodes the leader peptide, exons 2 and 3 encode the two extracellular domains, exon 4 encodes the transmembrane domain and exon 5 encodes the cytoplasmic tail. Within the DP molecule both the alpha chain and the beta chain contain the polymorphisms specifying the peptide binding specificities, resulting in up to 4 different molecules.

Molecular Weight:	Observed_MW: Refer to figures Calculated_MW: 29 kDa
-------------------	--

UniProt:	P04440
----------	------------------------

Pathways:	TCR Signaling , Cancer Immune Checkpoints , Human Leukocyte Antigen (HLA) in Adaptive Immune Response
-----------	---

Application Details

Application Notes:	WB 1:500-1:2000, IHC 1:20-1:100, ELISA 1:5000-1:10000
--------------------	---

Restrictions:	For Research Use only
---------------	-----------------------

Handling

Format:	Liquid
---------	--------

Concentration:	0.9 mg/mL
----------------	-----------

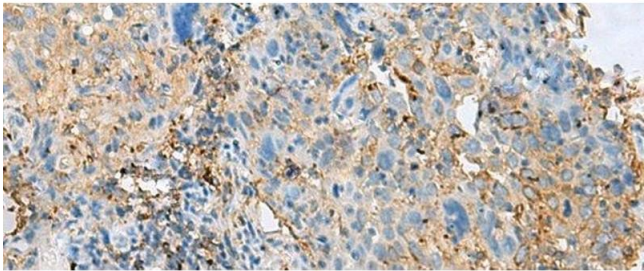
Buffer:	PBS with 0.05 % Sodium azide and 40 % Glycerol, pH 7.4
---------	--

Preservative:	Sodium azide
---------------	--------------

Precaution of Use:	This product contains Sodium azide: a POISONOUS AND HAZARDOUS SUBSTANCE which should be handled by trained staff only.
--------------------	--

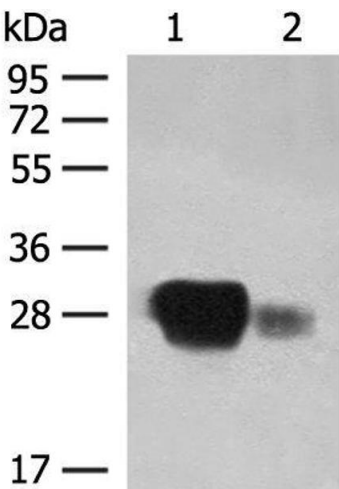
Storage:	-20 °C
----------	--------

Storage Comment:	Store at -20°C. Avoid freeze / thaw cycles.
------------------	---



Immunohistochemistry (Paraffin-embedded Sections)

Image 1. Immunohistochemistry of paraffin-embedded Human cervical cancer tissue using HLA-DPB1 Polyclonal Antibody at dilution of 1:50(x200)



Western Blotting

Image 2. Western blot analysis of Raji cell and Human spleen tissue lysates using HLA-DPB1 Polyclonal Antibody at dilution of 1:350