

Datasheet for ABIN7252855

**anti-TNRC5 antibody****3** Images[Go to Product page](#)

## Overview

Quantity:	200 µL
Target:	TNRC5 (CNPY3)
Reactivity:	Human, Mouse
Host:	Rabbit
Clonality:	Polyclonal
Conjugate:	This TNRC5 antibody is un-conjugated
Application:	Western Blotting (WB), Immunohistochemistry (IHC), ELISA

## Product Details

Immunogen:	Fusion protein of human CNPY3
Isotype:	IgG
Characteristics:	Polyclonal Antibody
Purification:	Antigen affinity purification

## Target Details

Target:	TNRC5 (CNPY3)
Alternative Name:	CNPY3 ( <a href="#">CNPY3 Products</a> )
Background:	CNPY3 (Canopy FGF Signaling Regulator 3) is a Protein Coding gene. Diseases associated with CNPY3 include Swayback. Among its related pathways are Innate Immune System and Activated TLR4 signalling. GO annotations related to this gene include receptor binding. An important paralog of this gene is CNPY4. This gene encodes a protein that binds members of

## Target Details

the toll-like receptor protein family and functions as a chaperone to aid in folding and export of these proteins. Alternative splicing results in multiple transcript variants. Naturally occurring readthrough transcription occurs between this locus and the downstream GNMT (glycine N-methyltransferase) gene and is represented with GenelD:107080644.

Molecular Weight: Observed\_MW: Refer to figures  
Calculated\_MW: 31 kDa

UniProt: [Q9BT09](#)

Pathways: [Activation of Innate immune Response](#), [Toll-Like Receptors Cascades](#)

## Application Details

Application Notes: WB 1:500-1:2000, IHC 1:50-1:300, ELISA 1:5000-1:10000

Restrictions: For Research Use only

## Handling

Format: Liquid

Concentration: 0.96 mg/mL

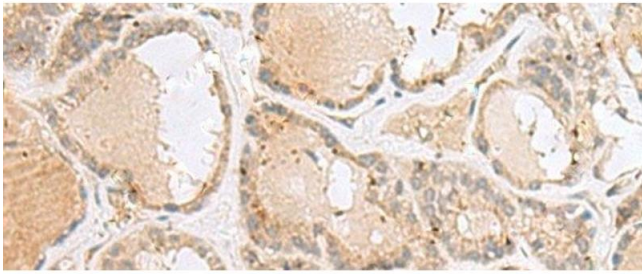
Buffer: PBS with 0.05 % Sodium azide and 40 % Glycerol, pH 7.4

Preservative: Sodium azide

Precaution of Use: This product contains Sodium azide: a POISONOUS AND HAZARDOUS SUBSTANCE which should be handled by trained staff only.

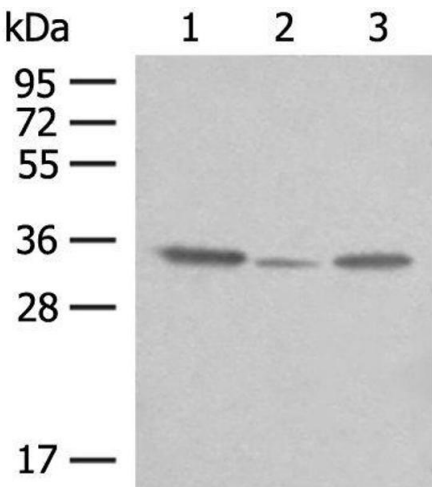
Storage: -20 °C

Storage Comment: Store at -20°C. Avoid freeze / thaw cycles.



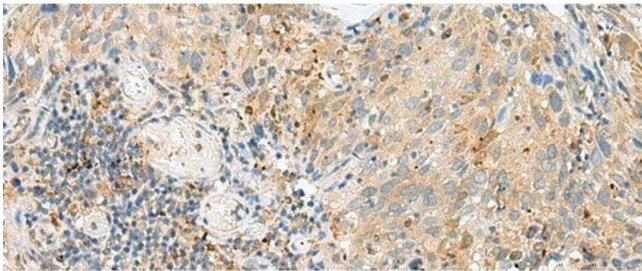
Immunohistochemistry (Paraffin-embedded Sections)

**Image 1.** Immunohistochemistry of paraffin-embedded Human thyroid cancer tissue using CNPY3 Polyclonal Antibody at dilution of 1:55(x200)



Western Blotting

**Image 2.** Western blot analysis of OP9, HepG2 and NIH/3T3 cell lysates using CNPY3 Polyclonal Antibody at dilution of 1:400



Immunohistochemistry (Paraffin-embedded Sections)

**Image 3.** Immunohistochemistry of paraffin-embedded Human cervical cancer tissue using CNPY3 Polyclonal Antibody at dilution of 1:55(x200)