

Datasheet for ABIN7252888

**anti-POLH antibody**

3 Images

[Go to Product page](#)

## Overview

Quantity:	200 µL
Target:	POLH
Reactivity:	Human, Mouse
Host:	Rabbit
Clonality:	Polyclonal
Conjugate:	This POLH antibody is un-conjugated
Application:	Western Blotting (WB), ELISA, Immunohistochemistry (IHC)

## Product Details

Immunogen:	Fusion protein of human POLH
Isotype:	IgG
Characteristics:	Polyclonal Antibody
Purification:	Antigen affinity purification

## Target Details

Target:	POLH
Alternative Name:	POLH ( <a href="#">POLH Products</a> )
Background:	This gene encodes a member of the Y family of specialized DNA polymerases. It copies undamaged DNA with a lower fidelity than other DNA-directed polymerases. However, it accurately replicates UV-damaged DNA, when thymine dimers are present, this polymerase inserts the complementary nucleotides in the newly synthesized DNA, thereby bypassing the

## Target Details

lesion and suppressing the mutagenic effect of UV-induced DNA damage. This polymerase is thought to be involved in hypermutation during immunoglobulin class switch recombination. Mutations in this gene result in XPV, a variant type of xeroderma pigmentosum. Several transcript variants encoding different isoforms have been found for this gene.

Molecular Weight: Observed\_MW: Refer to figures  
Calculated\_MW: 78 kDa

UniProt: [Q9Y253](#)

Pathways: [DNA Damage Repair](#)

## Application Details

Application Notes: WB 1:500-1:2000, IHC 1:50-1:300, ELISA 1:5000-1:10000

Restrictions: For Research Use only

## Handling

Format: Liquid

Concentration: 0.78 mg/mL

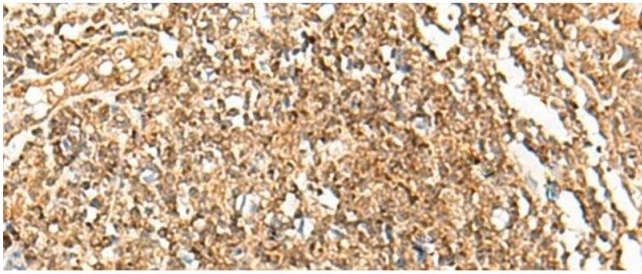
Buffer: PBS with 0.05 % Sodium azide and 40 % Glycerol, pH 7.4

Preservative: Sodium azide

Precaution of Use: This product contains Sodium azide: a POISONOUS AND HAZARDOUS SUBSTANCE which should be handled by trained staff only.

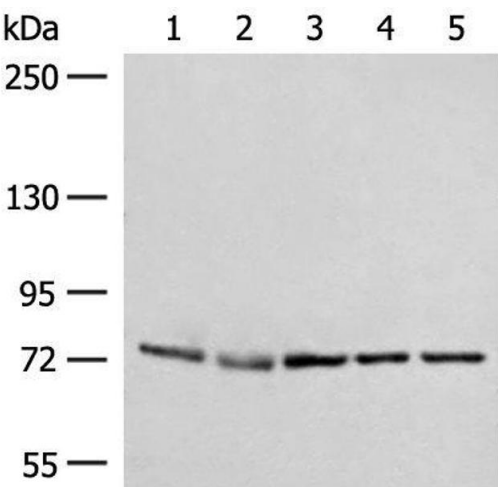
Storage: -20 °C

Storage Comment: Store at -20°C. Avoid freeze / thaw cycles.



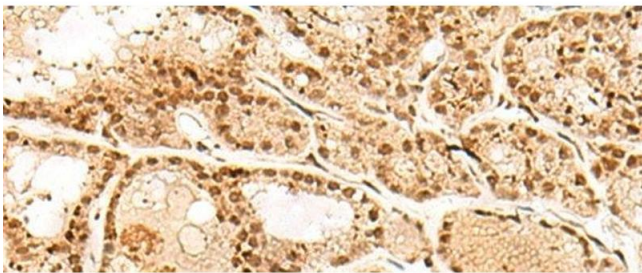
Immunohistochemistry (Paraffin-embedded Sections)

**Image 1.** Immunohistochemistry of paraffin-embedded Human tonsil tissue using POLH Polyclonal Antibody at dilution of 1:45(x200)



Western Blotting

**Image 2.** Western blot analysis of A172 231 Jurkat HepG2 and Hela cell lysates using POLH Polyclonal Antibody at dilution of 1:300



Immunohistochemistry (Paraffin-embedded Sections)

**Image 3.** Immunohistochemistry of paraffin-embedded Human thyroid cancer tissue using POLH Polyclonal Antibody at dilution of 1:45(x200)