

Datasheet for ABIN7252903

**anti-GPSM1 antibody**

3 Images

[Go to Product page](#)

## Overview

Quantity:	200 µL
Target:	GPSM1
Reactivity:	Human, Rat, Mouse
Host:	Rabbit
Clonality:	Polyclonal
Conjugate:	This GPSM1 antibody is un-conjugated
Application:	ELISA, Western Blotting (WB), Immunohistochemistry (IHC)

## Product Details

Immunogen:	Fusion protein of human GPSM1
Isotype:	IgG
Characteristics:	Polyclonal Antibody
Purification:	Antigen affinity purification

## Target Details

Target:	GPSM1
Alternative Name:	GPSM1 ( <a href="#">GPSM1 Products</a> )
Background:	G-protein signaling modulators (GPSMs) play diverse functional roles through their interaction with G-protein subunits. This gene encodes a receptor-independent activator of G protein signaling, which is one of several factors that influence the basal activity of G-protein signaling systems. The protein contains seven tetratricopeptide repeats in its N-terminal half and four G-

## Target Details

protein regulatory (GPR) motifs in its C-terminal half. Multiple alternatively spliced transcript variants encoding different isoforms have been found for this gene.

Molecular Weight: Observed\_MW: Refer to figures  
Calculated\_MW: 75 kDa

UniProt: [Q86YR5](#)

Pathways: [Regulation of G-Protein Coupled Receptor Protein Signaling](#)

## Application Details

Application Notes: WB 1:500-1:2000, IHC 1:50-1:300, ELISA 1:5000-1:10000

Restrictions: For Research Use only

## Handling

Format: Liquid

Concentration: 1.5 mg/mL

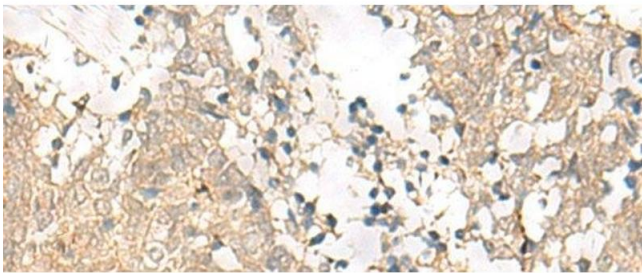
Buffer: PBS with 0.05 % Sodium azide and 40 % Glycerol, pH 7.4

Preservative: Sodium azide

Precaution of Use: This product contains Sodium azide: a POISONOUS AND HAZARDOUS SUBSTANCE which should be handled by trained staff only.

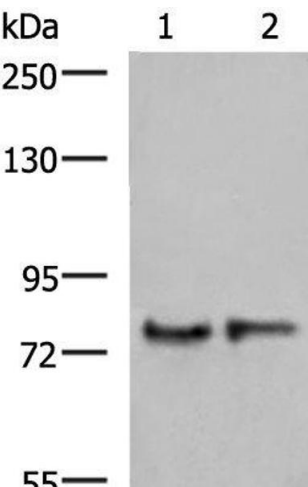
Storage: -20 °C

Storage Comment: Store at -20°C. Avoid freeze / thaw cycles.



Immunohistochemistry (Paraffin-embedded Sections)

**Image 1.** Immunohistochemistry of paraffin-embedded Human lung cancer tissue using GPSM1 Polyclonal Antibody at dilution of 1:85(x200)



Western Blotting

**Image 2.** Western blot analysis of Human cerebrum tissue and Mouse brain tissue lysates using GPSM1 Polyclonal Antibody at dilution of 1:1000



Immunohistochemistry (Paraffin-embedded Sections)

**Image 3.** Immunohistochemistry of paraffin-embedded Human esophagus cancer tissue using GPSM1 Polyclonal Antibody at dilution of 1:85(x200)