

Datasheet for ABIN7252906  
**anti-ENO3 antibody**



[Go to Product page](#)

3 Images

### Overview

Quantity:	200 µL
Target:	ENO3
Reactivity:	Human, Mouse, Rat
Host:	Rabbit
Clonality:	Polyclonal
Conjugate:	This ENO3 antibody is un-conjugated
Application:	Western Blotting (WB), ELISA, Immunohistochemistry (IHC)

### Product Details

Immunogen:	Fusion protein of human ENO3
Isotype:	IgG
Characteristics:	Polyclonal Antibody
Purification:	Antigen affinity purification

### Target Details

Target:	ENO3
Alternative Name:	ENO3 ( <a href="#">ENO3 Products</a> )
Background:	This gene encodes one of the three enolase isoenzymes found in mammals. This isoenzyme is found in skeletal muscle cells in the adult where it may play a role in muscle development and regeneration. A switch from alpha enolase to beta enolase occurs in muscle tissue during development in rodents. Mutations in this gene have been associated with glycogen storage disease.

## Target Details

Alternatively spliced transcript variants encoding different isoforms have been described.

Molecular Weight: Observed\_MW: Refer to figures  
Calculated\_MW: 47 kDa

UniProt: [P13929](#)

## Application Details

Application Notes: WB 1:500-1:2000, IHC 1:50-1:200, ELISA 1:5000-1:10000

Restrictions: For Research Use only

## Handling

Format: Liquid

Concentration: 1.26 mg/mL

Buffer: PBS with 0.05 % Sodium azide and 40 % Glycerol, pH 7.4

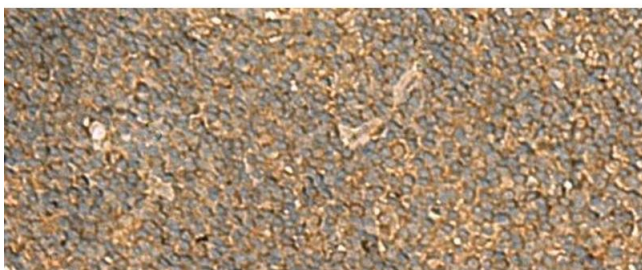
Preservative: Sodium azide

Precaution of Use: This product contains Sodium azide: a POISONOUS AND HAZARDOUS SUBSTANCE which should be handled by trained staff only.

Storage: -20 °C

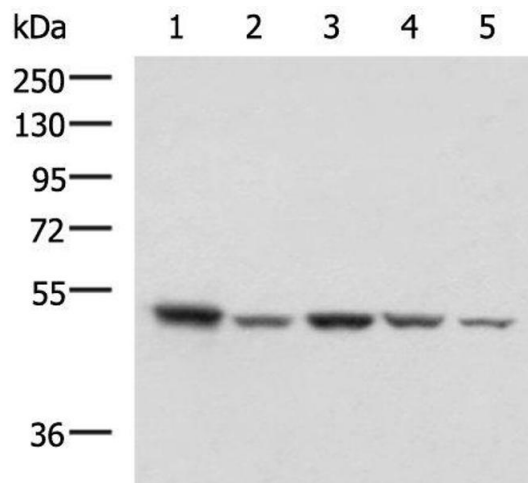
Storage Comment: Store at -20°C. Avoid freeze / thaw cycles.

## Images



### Immunohistochemistry (Paraffin-embedded Sections)

**Image 1.** Immunohistochemistry of paraffin-embedded Human tonsil tissue using ENO3 Polyclonal Antibody at dilution of 1:70(x200)



### Western Blotting

**Image 2.** Western blot analysis of HepG2 NIH/3T3 C2CL2 Raji and Jurkat cell lysates using ENO3 Polyclonal Antibody at dilution of 1:1000

### Immunohistochemistry (Paraffin-embedded Sections)

**Image 3.** Immunohistochemistry of paraffin-embedded Human brain tissue using ENO3 Polyclonal Antibody at dilution of 1:70(x200)

