

Datasheet for ABIN7252918

anti-TLE6 antibody[Go to Product page](#)**1** Image

Overview

Quantity:	200 µL
Target:	TLE6
Reactivity:	Human
Host:	Rabbit
Clonality:	Polyclonal
Conjugate:	This TLE6 antibody is un-conjugated
Application:	Immunohistochemistry (IHC), ELISA

Product Details

Immunogen:	Fusion protein of human TLE6
Isotype:	IgG
Characteristics:	Polyclonal Antibody
Purification:	Antigen affinity purification

Target Details

Target:	TLE6
Alternative Name:	TLE6 (TLE6 Products)
Background:	This gene encodes a member of the Groucho/ transducin-like Enhancer of split family of transcriptional co-repressors. The encoded protein is a component of the mammalian subcortical maternal complex, which is required for preimplantation development. In mouse, knock out of this gene results in cleavage-stage embryonic arrest resulting from defective

Target Details

cytoplasmic F-actin meshwork formation and asymmetric cell division. In human, an allelic variant in this gene is associated with preimplantation embryonic lethality. Alternative splicing results in multiple transcript variants.

UniProt: [Q9H808](#)

Pathways: [WNT Signaling](#)

Application Details

Application Notes: IHC 1:50-1:200, ELISA 1:5000-1:10000

Restrictions: For Research Use only

Handling

Format: Liquid

Concentration: 1.38 mg/mL

Buffer: PBS with 0.05 % Sodium azide and 40 % Glycerol, pH 7.4

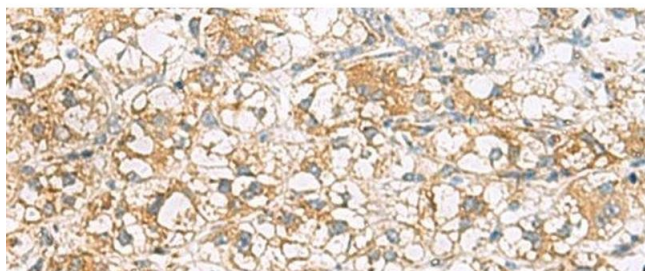
Preservative: Sodium azide

Precaution of Use: This product contains Sodium azide: a POISONOUS AND HAZARDOUS SUBSTANCE which should be handled by trained staff only.

Storage: -20 °C

Storage Comment: Store at -20°C. Avoid freeze / thaw cycles.

Images



Immunohistochemistry (Paraffin-embedded Sections)

Image 1. Immunohistochemistry of paraffin-embedded Human liver cancer tissue using TLE6 Polyclonal Antibody at dilution of 1:75(x200)