

Datasheet for ABIN725300

**anti-Estrogen Receptor alpha antibody (AA 331-360)****3** Images**1** Publication[Go to Product page](#)

## Overview

Quantity:	100 µL
Target:	Estrogen Receptor alpha (ESR1)
Binding Specificity:	AA 331-360
Reactivity:	Human, Rat
Host:	Rabbit
Clonality:	Polyclonal
Conjugate:	This Estrogen Receptor alpha antibody is un-conjugated
Application:	Western Blotting (WB), ELISA, Flow Cytometry (FACS), Immunofluorescence (Cultured Cells) (IF (cc))

## Product Details

Immunogen:	KLH conjugated synthetic peptide derived from rat Estrogen Receptor alpha
Isotype:	IgG
Cross-Reactivity:	Human, Rat
Predicted Reactivity:	Mouse,Dog,Cow,Rabbit
Purification:	Purified by Protein A.

## Target Details

Target:	Estrogen Receptor alpha (ESR1)
Alternative Name:	Estrogen Receptor alpha ( <a href="#">ESR1 Products</a> )

## Target Details

Background:	<p>Synonyms: Esr, ER-alpha, RNESTROR, Estrogen receptor, ER, Estradiol receptor, Nuclear receptor subfamily 3 group A member 1, Esr1, Estr, Nr3a1</p> <p>Background: Nuclear hormone receptor. The steroid hormones and their receptors are involved in the regulation of eukaryotic gene expression and affect cellular proliferation and differentiation in target tissues. Ligand-dependent nuclear transactivation involves either direct homodimer binding to a palindromic estrogen response element (ERE) sequence or association with other DNA-binding transcription factors, such as AP-1/c-Jun, c-Fos, ATF-2, Sp1 and Sp3, to mediate ERE-independent signaling. Ligand binding induces a conformational change allowing subsequent or combinatorial association with multiprotein coactivator complexes through LXXLL motifs of their respective components. Mutual transrepression occurs between the estrogen receptor (ER) and NF-kappa-B in a cell-type specific manner. Decreases NF-kappa-B DNA-binding activity and inhibits NF-kappa-B-mediated transcription from the IL6 promoter and displace RELA/p65 and associated coregulators from the promoter. Recruited to the NF-kappa-B response element of the CCL2 and IL8 promoters and can displace CREBBP. Present with NF-kappa-B components RELA/p65 and NFKB1/p50 on ERE sequences. Can also act synergistically with NF-kappa-B to activate transcription involving respective recruitment adjacent response elements, the function involves CREBBP. Can activate the transcriptional activity of TFF1. Also mediates membrane-initiated estrogen signaling involving various kinase cascades. Essential for MTA1-mediated transcriptional regulation of BRCA1 and BCAS3 (By similarity).</p>
-------------	---

Gene ID: 24890

UniProt: [P06211](#)

Pathways: [Nuclear Receptor Transcription Pathway](#), [EGFR Signaling Pathway](#), [Retinoic Acid Receptor Signaling Pathway](#), [Intracellular Steroid Hormone Receptor Signaling Pathway](#), [Steroid Hormone Mediated Signaling Pathway](#), [Ribonucleoprotein Complex Subunit Organization](#), [Ribosome Assembly](#)

## Application Details

Application Notes:	WB 1:300-5000 ELISA 1:500-1000 FCM 1:20-100 IF(ICC) 1:50-200
Restrictions:	For Research Use only

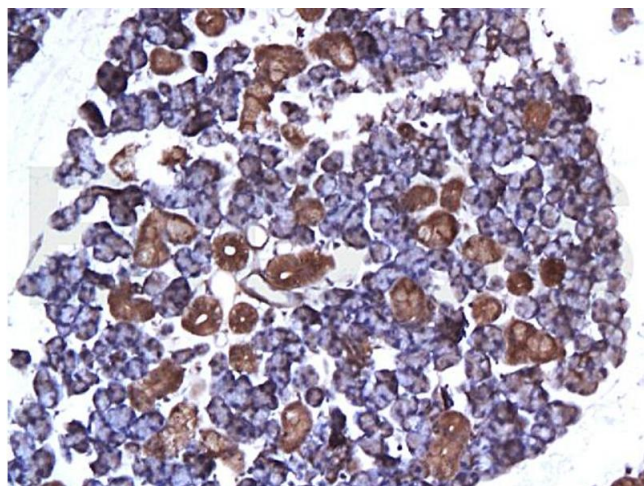
## Handling

Format:	Liquid
Concentration:	1 µg/µL
Buffer:	0.01M TBS( pH 7.4) with 1 % BSA, 0.02 % Proclin300 and 50 % Glycerol.
Preservative:	ProClin
Precaution of Use:	This product contains ProClin: a POISONOUS AND HAZARDOUS SUBSTANCE, which should be handled by trained staff only.
Storage:	4 °C,-20 °C
Storage Comment:	Shipped at 4°C. Store at -20°C for one year. Avoid repeated freeze/thaw cycles.
Expiry Date:	12 months

## Publications

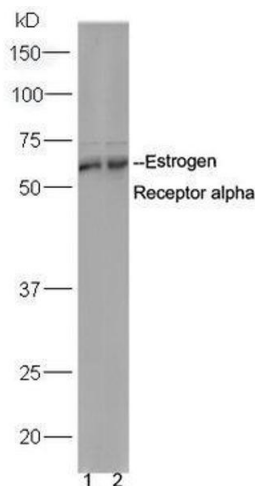
Product cited in:	Zhou, Li, Wang, Cheng, Ding: "Estrogen receptor alpha is essential for the proliferation of prostatic smooth muscle cells stimulated by 17 $\beta$ -estradiol and insulin-like growth factor 1." in: <b>Cell biochemistry and function</b> , Vol. 29, Issue 2, pp. 120-5, (2011) ( <a href="#">PubMed</a> ).
-------------------	--

## Images



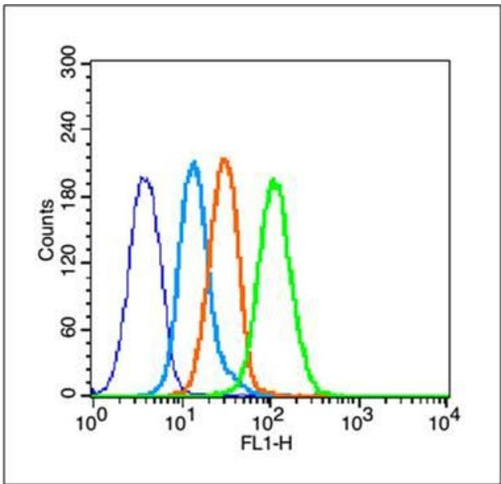
### Immunohistochemistry

**Image 1.** Formalin-fixed and paraffin embedded: rat submaxillary gland labeled with Anti-ER-alpha Polyclonal Antibody (ABIN725300), Unconjugated at 1:200 followed by conjugation to the secondary antibody and DAB staining



### Western Blotting

**Image 2.** Lane 1: MCF-7 Lane 2: DU145 lysates probed with Anti-Estrogen Receptor alpha Polyclonal Antibody, Unconjugated at 1:5000 90min in 37°C.



**Image 3.** MCF-7 cells probed with Estrogen Receptor alpha Antibody, unconjugated at 1:100 dilution for 30 minutes compared to control cells (blue) and isotype control (orange)