

Datasheet for ABIN7253101

anti-ARL2BP antibody

2 Images

[Go to Product page](#)

Overview

Quantity:	200 µL
Target:	ARL2BP
Reactivity:	Human, Mouse, Rat
Host:	Rabbit
Clonality:	Polyclonal
Conjugate:	This ARL2BP antibody is un-conjugated
Application:	ELISA, Immunohistochemistry (IHC)

Product Details

Immunogen:	Fusion protein of human ARL2BP
Isotype:	IgG
Characteristics:	Polyclonal Antibody
Purification:	Antigen affinity purification

Target Details

Target:	ARL2BP
Alternative Name:	ARL2BP (ARL2BP Products)
Background:	ADP-ribosylation factor (ARF)-like proteins (ARLs) comprise a functionally distinct group of the ARF family of RAS-related GTPases. The protein encoded by this gene binds to ARL2.GTP with high affinity but does not interact with ARL2.GDP, activated ARF, or RHO proteins. The lack of detectable membrane association of this protein or ARL2 upon activation of ARL2 is suggestive

Target Details

of actions distinct from those of the ARFs. This protein is considered to be the first ARL2-specific effector identified, due to its interaction with ARL2.GTP but lack of ARL2 GTPase-activating protein activity. ARL2BP (ADP Ribosylation Factor Like GTPase 2 Binding Protein) is a Protein Coding gene. Diseases associated with ARL2BP include Retinitis Pigmentosa With Or Without Situs Inversus and Arl2bp-Related Retinitis Pigmentosa. Among its related pathways are Integration of energy metabolism and Metabolism. GO annotations related to this gene include transcription coactivator activity and GTPase regulator activity.

UniProt: [Q9Y2Y0](#)

Pathways: [Maintenance of Protein Location](#)

Application Details

Application Notes: IHC 1:20-1:100, ELISA 1:5000-1:10000

Restrictions: For Research Use only

Handling

Format: Liquid

Concentration: 0.84 mg/mL

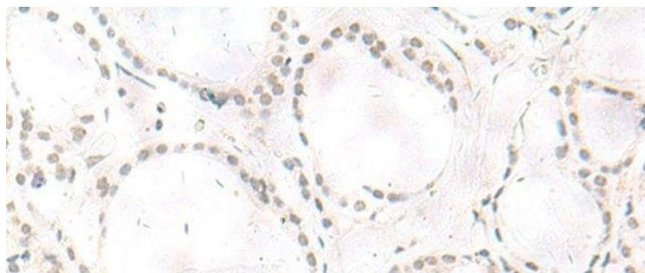
Buffer: PBS with 0.05 % Sodium azide and 40 % Glycerol, pH 7.4

Preservative: Sodium azide

Precaution of Use: This product contains Sodium azide: a POISONOUS AND HAZARDOUS SUBSTANCE which should be handled by trained staff only.

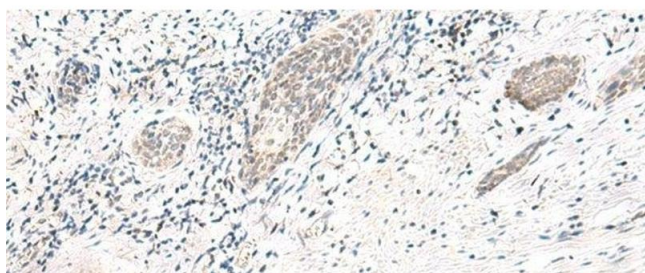
Storage: -20 °C

Storage Comment: Store at -20°C. Avoid freeze / thaw cycles.



Immunohistochemistry (Paraffin-embedded Sections)

Image 1. Immunohistochemistry of paraffin-embedded Human thyroid cancer tissue using ARL2BP Polyclonal Antibody at dilution of 1:50(x200)



Immunohistochemistry (Paraffin-embedded Sections)

Image 2. Immunohistochemistry of paraffin-embedded Human esophagus cancer tissue using ARL2BP Polyclonal Antibody at dilution of 1:50(x200)