

Datasheet for ABIN7253284  
**anti-PPP1R3C antibody**

## 2 Images

[Go to Product page](#)

## Overview

Quantity:	200 µL
Target:	PPP1R3C
Reactivity:	Human, Mouse, Rat
Host:	Rabbit
Clonality:	Polyclonal
Conjugate:	This PPP1R3C antibody is un-conjugated
Application:	ELISA, Immunohistochemistry (IHC)

## Product Details

Immunogen:	Fusion protein of human PPP1R3C
Isotype:	IgG
Characteristics:	Polyclonal Antibody
Purification:	Antigen affinity purification

## Target Details

Target:	PPP1R3C
Alternative Name:	PPP1R3C ( <a href="#">PPP1R3C Products</a> )
Background:	This gene encodes a carbohydrate binding protein that is a subunit of the protein phosphatase 1 (PP1) complex. PP1 catalyzes reversible protein phosphorylation, which is important in a wide range of cellular activities. The encoded protein affects glycogen biosynthesis by activating glycogen synthase and limiting glycogen breakdown by reducing glycogen phosphorylase

## Target Details

activity. DNA hypermethylation of this gene has been found in colorectal cancer patients. The encoded protein also interacts with the laforin protein, which is a protein tyrosine phosphatase implicated in Lafora disease.

UniProt:	<a href="#">Q9UQK1</a>
Pathways:	<a href="#">Cellular Glucan Metabolic Process</a> , <a href="#">Regulation of Carbohydrate Metabolic Process</a>

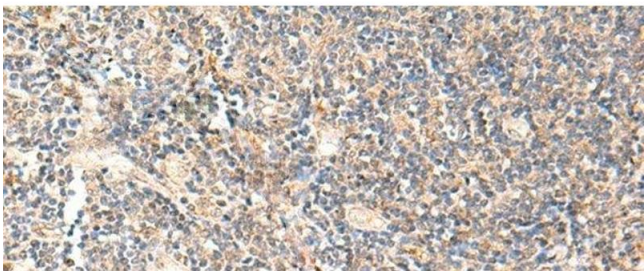
## Application Details

Application Notes:	IHC 1:50-1:300, ELISA 1:5000-1:10000
Restrictions:	For Research Use only

## Handling

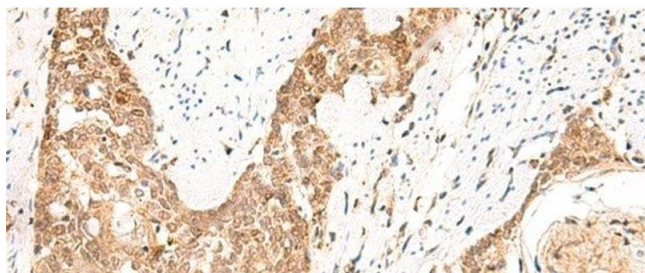
Format:	Liquid
Concentration:	0.9 mg/mL
Buffer:	PBS with 0.05 % Sodium azide and 40 % Glycerol, pH 7.4
Preservative:	Sodium azide
Precaution of Use:	This product contains Sodium azide: a POISONOUS AND HAZARDOUS SUBSTANCE which should be handled by trained staff only.
Storage:	-20 °C
Storage Comment:	Store at -20°C. Avoid freeze / thaw cycles.

## Images



### Immunohistochemistry (Paraffin-embedded Sections)

**Image 1.** Immunohistochemistry of paraffin-embedded Human tonsil tissue using PPP1R3C Polyclonal Antibody at dilution of 1:50(x200)



#### Immunohistochemistry (Paraffin-embedded Sections)

**Image 2.** Immunohistochemistry of paraffin-embedded Human esophagus cancer tissue using PPP1R3C Polyclonal Antibody at dilution of 1:50(x200)