

Datasheet for ABIN7253341

anti-LRG1 antibody**2** Images[Go to Product page](#)

Overview

Quantity:	200 µL
Target:	LRG1
Reactivity:	Human, Mouse
Host:	Rabbit
Clonality:	Polyclonal
Conjugate:	This LRG1 antibody is un-conjugated
Application:	Western Blotting (WB), Immunohistochemistry (IHC), ELISA

Product Details

Immunogen:	Fusion protein of human LRG1
Isotype:	IgG
Characteristics:	Polyclonal Antibody
Purification:	Antigen affinity purification

Target Details

Target:	LRG1
Alternative Name:	LRG1 (LRG1 Products)
Background:	<p>The leucine-rich repeat (LRR) family of proteins, including LRG1, have been shown to be involved in protein-protein interaction, signal transduction, and cell adhesion and development.</p> <p>LRG1 is expressed during granulocyte differentiation.</p>

Target Details

Molecular Weight: Observed_MW: Refer to figures
Calculated_MW: 38 kDa

UniProt: [P02750](#)

Pathways: [Brown Fat Cell Differentiation](#)

Application Details

Application Notes: WB 1:1000-1:5000, IHC 1:50-1:300, ELISA 1:5000-1:10000

Restrictions: For Research Use only

Handling

Format: Liquid

Concentration: 1.44 mg/mL

Buffer: PBS with 0.05 % Sodium azide and 40 % Glycerol, pH 7.4

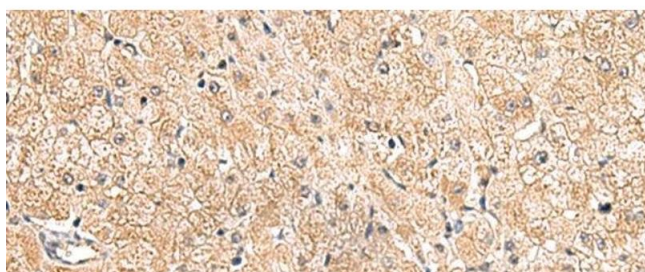
Preservative: Sodium azide

Precaution of Use: This product contains Sodium azide: a POISONOUS AND HAZARDOUS SUBSTANCE which should be handled by trained staff only.

Storage: -20 °C

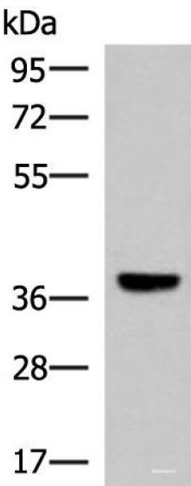
Storage Comment: Store at -20°C. Avoid freeze / thaw cycles.

Images



Immunohistochemistry (Paraffin-embedded Sections)

Image 1. Immunohistochemistry of paraffin-embedded Human liver cancer tissue using LRG1 Polyclonal Antibody at dilution of 1:80(x200)



Western Blotting

Image 2. Western blot analysis of Mouse liver tissue lysate using LRG1 Polyclonal Antibody at dilution of 1:1000