

Datasheet for ABIN7253395
anti-LIM Domain Binding 1 Protein antibody

3 Images

[Go to Product page](#)

Overview

Quantity:	200 µL
Target:	LIM Domain Binding 1 Protein (LDB1)
Reactivity:	Human, Mouse
Host:	Rabbit
Clonality:	Polyclonal
Conjugate:	This LIM Domain Binding 1 Protein antibody is un-conjugated
Application:	Western Blotting (WB), ELISA, Immunohistochemistry (IHC)

Product Details

Immunogen:	Fusion protein of human LDB1
Isotype:	IgG
Characteristics:	Polyclonal Antibody
Purification:	Antigen affinity purification

Target Details

Target:	LIM Domain Binding 1 Protein (LDB1)
Alternative Name:	LDB1 (LDB1 Products)
Background:	Binds to the LIM domain of a wide variety of LIM domain-containing transcription factors. May regulate the transcriptional activity of LIM-containing proteins by determining specific partner interactions. Plays a role in the development of interneurons and motor neurons in cooperation with LHX3 and ISL1. Acts synergistically with LHX1/LIM1 in axis formation and activation of

Target Details

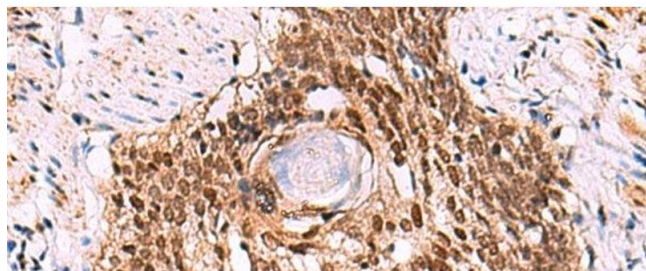
	gene expression. Acts with LMO2 in the regulation of red blood cell development, maintaining erythroid precursors in an immature state (By similarity).
Molecular Weight:	Observed_MW: Refer to figures Calculated_MW: 47 kDa
UniProt:	Q86U70
Pathways:	Stem Cell Maintenance , Chromatin Binding

Application Details

Application Notes:	WB 1:1000-1:5000, IHC 1:70-1:350, ELISA 1:5000-1:10000
Restrictions:	For Research Use only

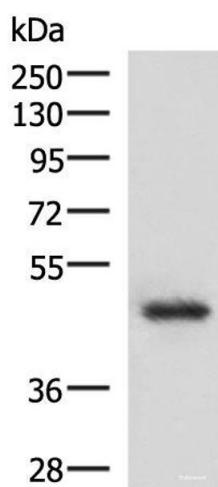
Handling

Format:	Liquid
Concentration:	1.26 mg/mL
Buffer:	PBS with 0.05 % Sodium azide and 40 % Glycerol, pH 7.4
Preservative:	Sodium azide
Precaution of Use:	This product contains Sodium azide: a POISONOUS AND HAZARDOUS SUBSTANCE which should be handled by trained staff only.
Storage:	-20 °C
Storage Comment:	Store at -20°C. Avoid freeze / thaw cycles.



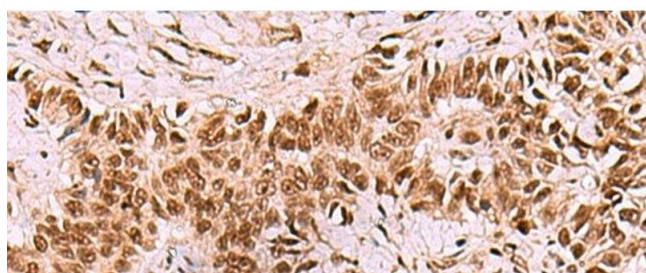
Immunohistochemistry (Paraffin-embedded Sections)

Image 1. Immunohistochemistry of paraffin-embedded Human esophagus cancer tissue using LDB1 Polyclonal Antibody at dilution of 1:70(x200)



Western Blotting

Image 2. Western blot analysis of 293T cell lysate using LDB1 Polyclonal Antibody at dilution of 1:1000



Immunohistochemistry (Paraffin-embedded Sections)

Image 3. Immunohistochemistry of paraffin-embedded Human ovarian cancer tissue using LDB1 Polyclonal Antibody at dilution of 1:70(x200)