

Datasheet for ABIN7253422

anti-PDHA1 antibody**2** Images[Go to Product page](#)

Overview

Quantity:	200 µL
Target:	PDHA1
Reactivity:	Human, Mouse, Rat
Host:	Rabbit
Clonality:	Polyclonal
Conjugate:	This PDHA1 antibody is un-conjugated
Application:	Western Blotting (WB), ELISA, Immunohistochemistry (IHC)

Product Details

Immunogen:	Fusion protein of human PDHA1
Isotype:	IgG
Characteristics:	Polyclonal Antibody
Purification:	Antigen affinity purification

Target Details

Target:	PDHA1
Alternative Name:	PDHA1 (PDHA1 Products)
Background:	PDHA1(Pyruvate dehydrogenase E1 component subunit alpha,somatic form,mitochondrial) is also named as PHE1A.It is one of the 3 enzymes of the pyruvate dehydrogenase complex which is a nuclear-encoded mitochondrial matrix multienzyme complex that provides the primary link between glycolysis and the tricarboxylic acid (TCA) cycle by catalyzing the

Target Details

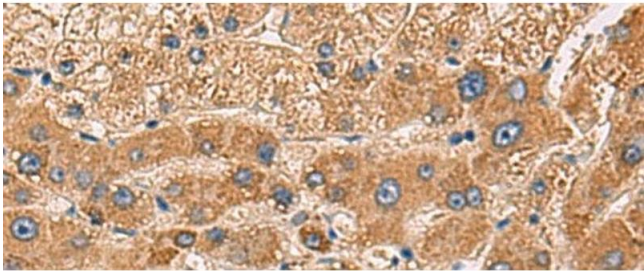
	irreversible conversion of pyruvate into acetyl-CoA. It has 4 isoforms produced by alternative splicing. Defects in PDHA1 are a cause of pyruvate dehydrogenase E1-alpha deficiency (PDHAD) and X-linked Leigh syndrome (X-LS).
Molecular Weight:	Observed_MW: Refer to figures Calculated_MW: 43 kDa
UniProt:	P08559
Pathways:	Warburg Effect

Application Details

Application Notes:	WB 1:1000-1:5000, IHC 1:50-1:300, ELISA 1:5000-1:10000
Restrictions:	For Research Use only

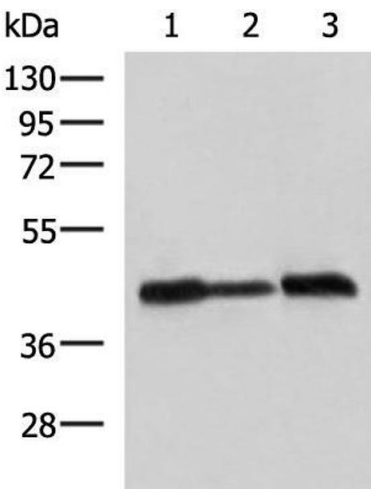
Handling

Format:	Liquid
Concentration:	0.9 mg/mL
Buffer:	PBS with 0.05 % Sodium azide and 40 % Glycerol, pH 7.4
Preservative:	Sodium azide
Precaution of Use:	This product contains Sodium azide: a POISONOUS AND HAZARDOUS SUBSTANCE which should be handled by trained staff only.
Storage:	-20 °C
Storage Comment:	Store at -20°C. Avoid freeze / thaw cycles.



Immunohistochemistry (Paraffin-embedded Sections)

Image 1. Immunohistochemistry of paraffin-embedded Human liver cancer tissue using PDHA1 Polyclonal Antibody at dilution of 1:50(x200)



Western Blotting

Image 2. Western blot analysis of A549 Hela and HepG2 cell lysates using PDHA1 Polyclonal Antibody at dilution of 1:750