

Datasheet for ABIN7253428
anti-FAM82A1 antibody

2 Images

[Go to Product page](#)

Overview

Quantity:	200 µL
Target:	FAM82A1 (RMDN2)
Reactivity:	Human, Mouse, Rat
Host:	Rabbit
Clonality:	Polyclonal
Conjugate:	This FAM82A1 antibody is un-conjugated
Application:	Western Blotting (WB), ELISA, Immunohistochemistry (IHC)

Product Details

Immunogen:	Fusion protein of human RMDN2
Isotype:	IgG
Characteristics:	Polyclonal Antibody
Purification:	Antigen affinity purification

Target Details

Target:	FAM82A1 (RMDN2)
Alternative Name:	RMDN2 (RMDN2 Products)
Background:	The human protein FAM82A1, also known as regulator of microtubule dynamics 2 (RMD2), was one of three proteins identified as related to a family of microtubule-associated proteins in <i>C. elegans</i> . FAM82A1 contains multiple coiled-coil domains and localize to the spindle microtubules and spindle poles during cell division. During interphase, RMD2 localizes to the

Target Details

	cytoplasm with protein observed in the microtubule lattice and perinuclear region.
Molecular Weight:	Observed_MW: Refer to figures Calculated_MW: 47 kDa
UniProt:	Q96LZ7

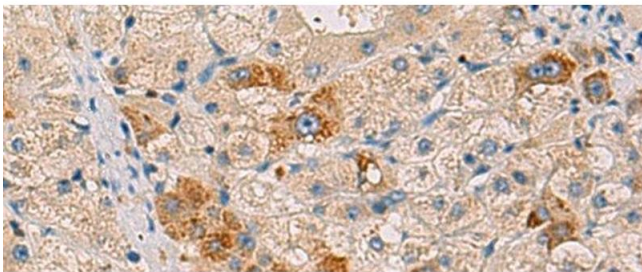
Application Details

Application Notes:	WB 1:500-1:2000, IHC 1:30-1:150, ELISA 1:5000-1:10000
Restrictions:	For Research Use only

Handling

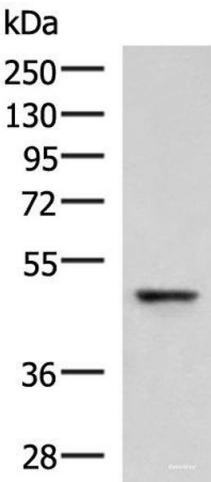
Format:	Liquid
Concentration:	0.9 mg/mL
Buffer:	PBS with 0.05 % Sodium azide and 40 % Glycerol, pH 7.4
Preservative:	Sodium azide
Precaution of Use:	This product contains Sodium azide: a POISONOUS AND HAZARDOUS SUBSTANCE which should be handled by trained staff only.
Storage:	-20 °C
Storage Comment:	Store at -20°C. Avoid freeze / thaw cycles.

Images



Immunohistochemistry (Paraffin-embedded Sections)

Image 1. Immunohistochemistry of paraffin-embedded Human liver cancer tissue using RMDN2 Polyclonal Antibody at dilution of 1:50(x200)



Western Blotting

Image 2. Western blot analysis of Human fetal liver tissue lysate using RMDN2 Polyclonal Antibody at dilution of 1:750