



[Go to Product page](#)

Datasheet for ABIN7253431
anti-SETDB1 antibody

2 Images

Overview

Quantity:	200 µL
Target:	SETDB1
Reactivity:	Human, Mouse
Host:	Rabbit
Clonality:	Polyclonal
Application:	ELISA, Immunohistochemistry (IHC)

Product Details

Immunogen:	Fusion protein of human SETDB1
Isotype:	IgG
Characteristics:	Polyclonal Antibody
Purification:	Antigen affinity purification

Target Details

Target:	SETDB1
Alternative Name:	SETDB1 (SETDB1 Products)
Background:	SETDB1, also named as ESET, KIAA0067 and KMT1E, belongs to the histone-lysine methyltransferase family. It is a SET domain protein with histone H3-K9-specific methyltransferase activity. H3 'Lys-9' trimethylation is coordinated with DNA methylation and represents a specific tag for epigenetic transcriptional repression by recruiting HP1 (CBX1, CBX3 and/or CBX5) proteins to methylated histones. SETDB1 mainly functions in

Target Details

euchromatin regions,thereby playing a central role in the silencing of euchromatic genes. It probably forms a complex with MBD1 and ATF7IP that represses transcription and couples DNA methylation and histone 'Lys-9' trimethylation. Its activity is dependent on MBD1 and is heritably maintained through DNA replication by being recruited by CAF-1. SETDB1 regulates histone methylation,gene silencing,and transcriptional repression. It has been identified as a target for treatment in Huntington Disease,given that gene silencing and transcription dysfunction likely play a role in the disease pathogenesis.

UniProt: [Q15047](#)

Application Details

Application Notes: IHC 1:50-1:300, ELISA 1:5000-1:10000

Restrictions: For Research Use only

Handling

Format: Liquid

Concentration: 1.08 mg/mL

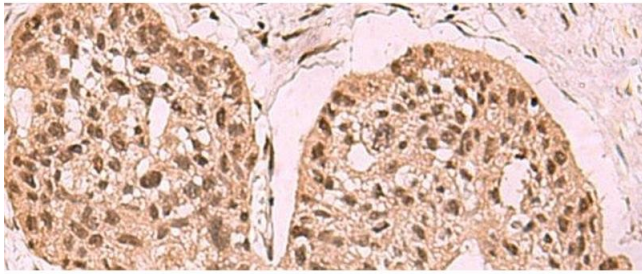
Buffer: PBS with 0.05 % Sodium azide and 40 % Glycerol, pH 7.4

Preservative: Sodium azide

Precaution of Use: This product contains Sodium azide: a POISONOUS AND HAZARDOUS SUBSTANCE which should be handled by trained staff only.

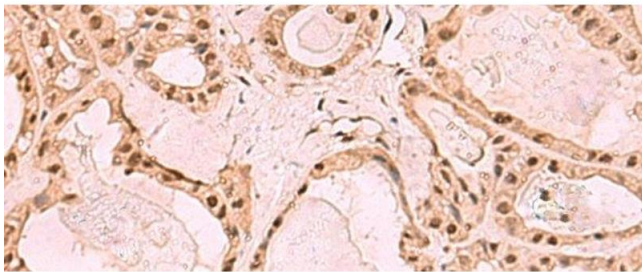
Storage: -20 °C

Storage Comment: Store at -20°C. Avoid freeze / thaw cycles.



Immunohistochemistry (Paraffin-embedded Sections)

Image 1. Immunohistochemistry of paraffin-embedded Human esophagus cancer tissue using SETDB1 Polyclonal Antibody at dilution of 1:60(x200)



Immunohistochemistry (Paraffin-embedded Sections)

Image 2. Immunohistochemistry of paraffin-embedded Human thyroid cancer tissue using SETDB1 Polyclonal Antibody at dilution of 1:60(x200)