

Datasheet for ABIN7253515

anti-ZSWIM1 antibody**3** Images[Go to Product page](#)

Overview

Quantity:	200 µL
Target:	ZSWIM1
Reactivity:	Human, Mouse
Host:	Rabbit
Clonality:	Polyclonal
Conjugate:	This ZSWIM1 antibody is un-conjugated
Application:	Western Blotting (WB), Immunohistochemistry (IHC), ELISA

Product Details

Immunogen:	Fusion protein of human ZSWIM1
Isotype:	IgG
Characteristics:	Polyclonal Antibody
Purification:	Antigen affinity purification

Target Details

Target:	ZSWIM1
Alternative Name:	ZSWIM1 (ZSWIM1 Products)
Background:	Zinc-finger proteins contain DNA-binding domains and have a wide variety of functions, most of which encompass some form of transcriptional activation or repression. ZSWIM1 (zinc finger SWIM domain-containing protein 1), also known as C20orf162, is a 485 amino acid protein that contains one SWIM-type zinc finger. The gene encoding ZSWIM1 maps to human chromosome

Target Details

20. Comprising approximately 2 % of the human genome, chromosome 20 contains nearly 63 million bases that encode over 600 genes, some of which are associated with Creutzfeldt-Jakob disease, amyotrophic lateral sclerosis, spinal muscular atrophy, ring chromosome 20 epilepsy syndrome and Alagille syndrome. Additionally, chromosome 20 contains a region with numerous genes which are thought important for seminal production and may be potential targets for male contraception.

Molecular Weight: Observed_MW: Refer to figures
Calculated_MW: 55 kDa

UniProt: [Q9BR11](#)

Application Details

Application Notes: WB 1:500-1:2000, IHC 1:50-1:300, ELISA 1:5000-1:10000

Restrictions: For Research Use only

Handling

Format: Liquid

Concentration: 0.96 mg/mL

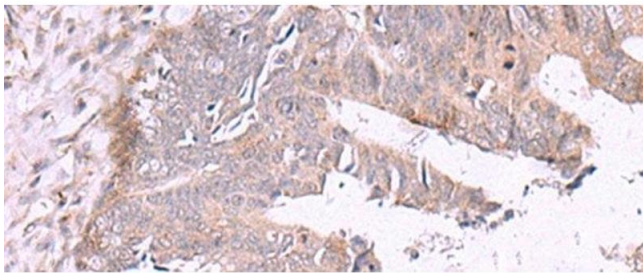
Buffer: PBS with 0.05 % Sodium azide and 40 % Glycerol, pH 7.4

Preservative: Sodium azide

Precaution of Use: This product contains Sodium azide: a POISONOUS AND HAZARDOUS SUBSTANCE which should be handled by trained staff only.

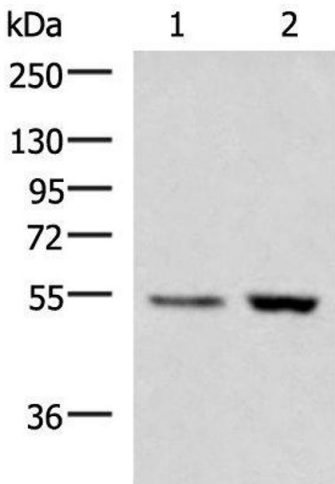
Storage: -20 °C

Storage Comment: Store at -20°C. Avoid freeze / thaw cycles.



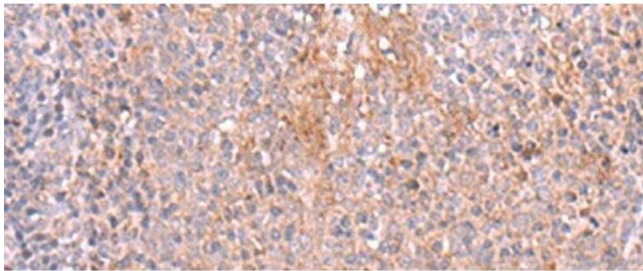
Immunohistochemistry (Paraffin-embedded Sections)

Image 1. Immunohistochemistry of paraffin-embedded Human colorectal cancer tissue using ZSWIM1 Polyclonal Antibody at dilution of 1:55(x200)



Western Blotting

Image 2. Western blot analysis of Human placenta tissue LOVO cell lysates using ZSWIM1 Polyclonal Antibody at dilution of 1:550



Immunohistochemistry (Paraffin-embedded Sections)

Image 3. Immunohistochemistry of paraffin-embedded Human tonsil tissue using ZSWIM1 Polyclonal Antibody at dilution of 1:55(x200)