

Datasheet for ABIN7253527

**anti-TSEN2 antibody**

3 Images

[Go to Product page](#)

## Overview

Quantity:	200 µL
Target:	TSEN2
Reactivity:	Human, Mouse, Rat
Host:	Rabbit
Clonality:	Polyclonal
Conjugate:	This TSEN2 antibody is un-conjugated
Application:	Western Blotting (WB), ELISA, Immunohistochemistry (IHC)

## Product Details

Immunogen:	Fusion protein of human TSEN2
Isotype:	IgG
Characteristics:	Polyclonal Antibody
Purification:	Antigen affinity purification

## Target Details

Target:	TSEN2
Alternative Name:	TSEN2 ( <a href="#">TSEN2 Products</a> )
Background:	This gene encodes one of the subunits of the tRNA splicing endonuclease. This endonuclease catalyzes the first step in RNA splicing which is the removal of introns. Mutations in this gene have been associated with pontocerebellar hypoplasia type 2. A pseudogene has been identified on chromosome 4. Multiple transcript variants encoding different isoforms have been

## Target Details

found for this gene.

Molecular Weight: Observed\_MW: Refer to figures  
Calculated\_MW: 53 kDa

UniProt: [Q8NCE0](#)

Pathways: [Nuclear Receptor Transcription Pathway](#), [Regulation of Lipid Metabolism by PPARalpha](#)

## Application Details

Application Notes: WB 1:1000-1:5000, IHC 1:50-1:300, ELISA 1:5000-1:10000

Restrictions: For Research Use only

## Handling

Format: Liquid

Concentration: 1.44 mg/mL

Buffer: PBS with 0.05 % Sodium azide and 40 % Glycerol, pH 7.4

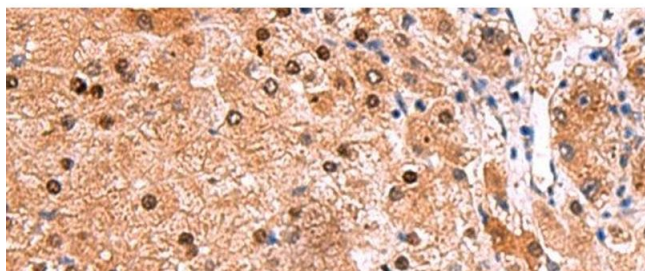
Preservative: Sodium azide

Precaution of Use: This product contains Sodium azide: a POISONOUS AND HAZARDOUS SUBSTANCE which should be handled by trained staff only.

Storage: -20 °C

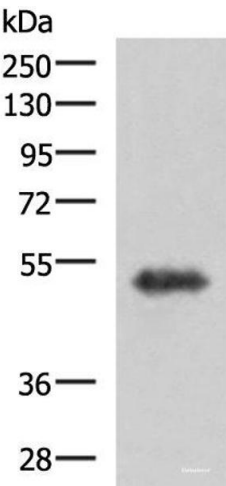
Storage Comment: Store at -20°C. Avoid freeze / thaw cycles.

## Images



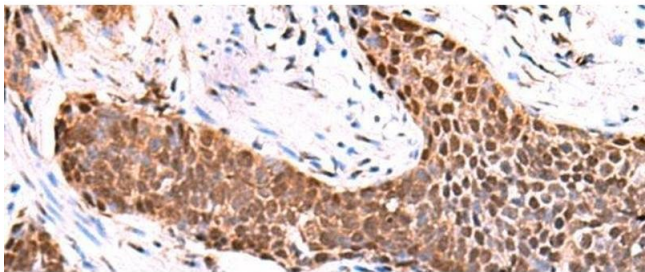
### Immunohistochemistry (Paraffin-embedded Sections)

**Image 1.** Immunohistochemistry of paraffin-embedded Human liver cancer tissue using TSEN2 Polyclonal Antibody at dilution of 1:80(x200)



#### Western Blotting

**Image 2.** Western blot analysis of Human fetal brain tissue lysate using TSEN2 Polyclonal Antibody at dilution of 1:1000



#### Immunohistochemistry (Paraffin-embedded Sections)

**Image 3.** Immunohistochemistry of paraffin-embedded Human esophagus cancer tissue using TSEN2 Polyclonal Antibody at dilution of 1:80(x200)