

Datasheet for ABIN7253791

**anti-ZG16 antibody****3** Images[Go to Product page](#)

## Overview

Quantity:	200 µL
Target:	ZG16
Reactivity:	Human, Mouse
Host:	Rabbit
Clonality:	Polyclonal
Conjugate:	This ZG16 antibody is un-conjugated
Application:	ELISA, Western Blotting (WB), Immunohistochemistry (IHC)

## Product Details

Immunogen:	Fusion protein of human ZG16
Isotype:	IgG
Characteristics:	Polyclonal Antibody
Purification:	Antigen affinity purification

## Target Details

Target:	ZG16
Alternative Name:	ZG16 ( <a href="#">ZG16 Products</a> )
Background:	May play a role in protein trafficking. May act as a linker molecule between the submembranous matrix on the luminal side of zymogen granule membrane (ZGM) and aggregated secretory proteins during granule formation in the TGN.

## Target Details

Molecular Weight: Observed\_MW: Refer to figures  
Calculated\_MW: 18 kDa

UniProt: [O60844](#)

## Application Details

Application Notes: WB 1:1000-1:5000, IHC 1:100-1:300, ELISA 1:5000-1:10000

Restrictions: For Research Use only

## Handling

Format: Liquid

Concentration: 1.68 mg/mL

Buffer: PBS with 0.05 % Sodium azide and 40 % Glycerol, pH 7.4

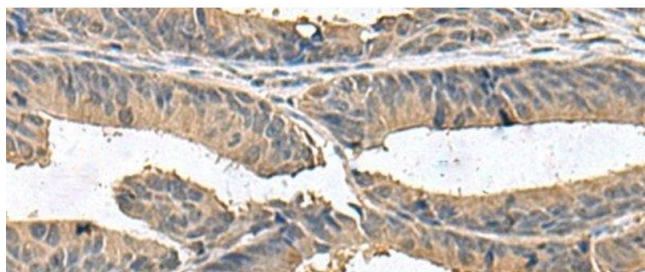
Preservative: Sodium azide

Precaution of Use: This product contains Sodium azide: a POISONOUS AND HAZARDOUS SUBSTANCE which should be handled by trained staff only.

Storage: -20 °C

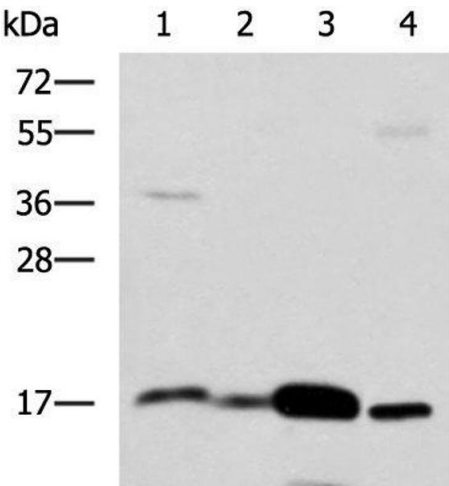
Storage Comment: Store at -20°C. Avoid freeze / thaw cycles.

## Images



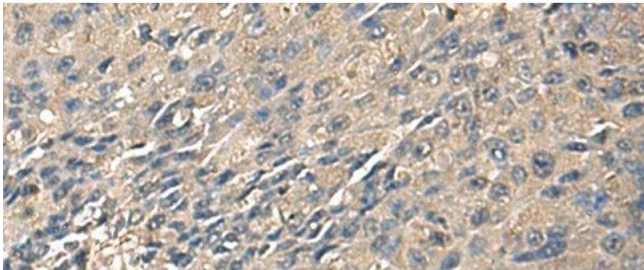
### Immunohistochemistry (Paraffin-embedded Sections)

**Image 1.** Immunohistochemistry of paraffin-embedded Human colorectal cancer tissue using ZG16 Polyclonal Antibody at dilution of 1:95(x200)



Western Blotting

**Image 2.** Western blot analysis of Mouse Pancreas tissue Mouse small intestines tissue Mouse large intestine tissue Human sigmoid tissue lysates using ZG16 Polyclonal Antibody at dilution of 1:1350



Immunohistochemistry (Paraffin-embedded Sections)

**Image 3.** Immunohistochemistry of paraffin-embedded Human liver cancer tissue using ZG16 Polyclonal Antibody at dilution of 1:95(x200)