



Datasheet for ABIN7253902 anti-PRPF40A antibody



[Go to Product page](#)

3 Images

Overview

Quantity:	200 µL
Target:	PRPF40A
Reactivity:	Human, Mouse
Host:	Rabbit
Clonality:	Polyclonal
Conjugate:	This PRPF40A antibody is un-conjugated
Application:	Western Blotting (WB), ELISA, Immunohistochemistry (IHC)

Product Details

Immunogen:	Fusion protein of human PRPF40A
Isotype:	IgG
Characteristics:	Polyclonal Antibody
Purification:	Antigen affinity purification

Target Details

Target:	PRPF40A
Alternative Name:	PRPF40A (PRPF40A Products)
Background:	Binds to WASL/N-WASP and suppresses its translocation from the nucleus to the cytoplasm, thereby inhibiting its cytoplasmic function (By similarity). Plays a role in the regulation of cell morphology and cytoskeletal organization. Required in the control of cell shape and migration. May play a role in cytokinesis. May be involved in pre-mRNA splicing.

Target Details

Molecular Weight: Observed_MW: Refer to figures
Calculated_MW: 109 kDa

UniProt: [O75400](#)

Application Details

Application Notes: WB 1:500-1:2000, IHC 1:50-1:200, ELISA 1:5000-1:10000

Restrictions: For Research Use only

Handling

Format: Liquid

Concentration: 1.02 mg/mL

Buffer: PBS with 0.05 % Sodium azide and 40 % Glycerol, pH 7.4

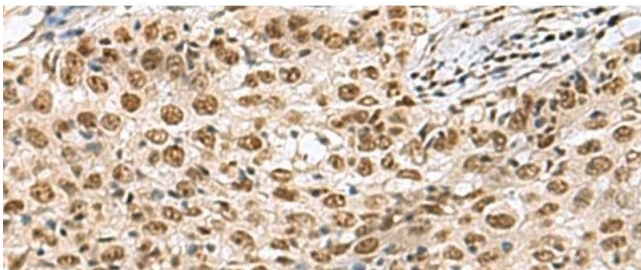
Preservative: Sodium azide

Precaution of Use: This product contains Sodium azide: a POISONOUS AND HAZARDOUS SUBSTANCE which should be handled by trained staff only.

Storage: -20 °C

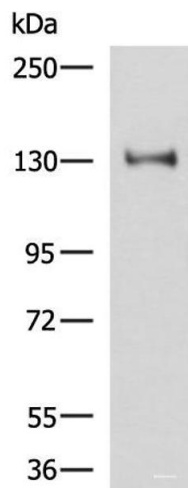
Storage Comment: Store at -20°C. Avoid freeze / thaw cycles.

Images



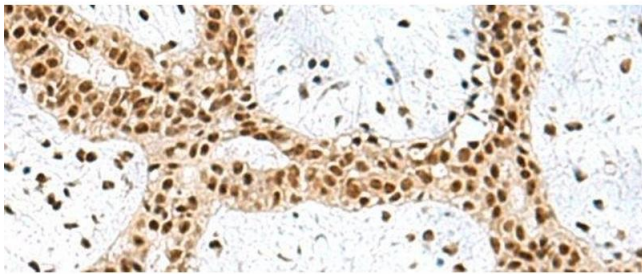
Immunohistochemistry (Paraffin-embedded Sections)

Image 1. Immunohistochemistry of paraffin-embedded Human esophagus cancer tissue using PRPF40A Polyclonal Antibody at dilution of 1:60(x200)



Western Blotting

Image 2. Western blot analysis of Hela cell lysate using PRPF40A Polyclonal Antibody at dilution of 1:800



Immunohistochemistry (Paraffin-embedded Sections)

Image 3. Immunohistochemistry of paraffin-embedded Human breast cancer tissue using PRPF40A Polyclonal Antibody at dilution of 1:60(x200)