

Datasheet for ABIN7253941

**anti-RAB23 antibody****2** Images[Go to Product page](#)

## Overview

Quantity:	200 µL
Target:	RAB23
Reactivity:	Human, Mouse
Host:	Rabbit
Clonality:	Polyclonal
Conjugate:	This RAB23 antibody is un-conjugated
Application:	ELISA, Immunohistochemistry (IHC)

## Product Details

Immunogen:	Fusion protein of human RAB23
Isotype:	IgG
Characteristics:	Polyclonal Antibody
Purification:	Antigen affinity purification

## Target Details

Target:	RAB23
Alternative Name:	RAB23 ( <a href="#">RAB23 Products</a> )
Background:	This gene encodes a small GTPase of the Ras superfamily. Rab proteins are involved in the regulation of diverse cellular functions associated with intracellular membrane trafficking, including autophagy and immune response to bacterial infection. The encoded protein may play a role in central nervous system development by antagonizing sonic hedgehog signaling.

## Target Details

Disruption of this gene has been implicated in Carpenter syndrome as well as cancer.  
Alternative splicing results in multiple transcript variants.

UniProt: [Q9ULC3](#)

Pathways: [Tube Formation](#)

## Application Details

Application Notes: IHC 1:50-1:200, ELISA 1:5000-1:10000

Restrictions: For Research Use only

## Handling

Format: Liquid

Concentration: 0.72 mg/mL

Buffer: PBS with 0.05 % Sodium azide and 40 % Glycerol, pH 7.4

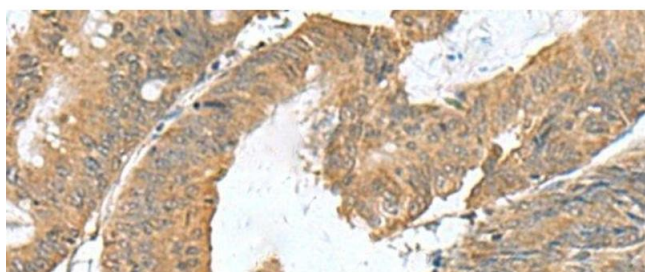
Preservative: Sodium azide

Precaution of Use: This product contains Sodium azide: a POISONOUS AND HAZARDOUS SUBSTANCE which should be handled by trained staff only.

Storage: -20 °C

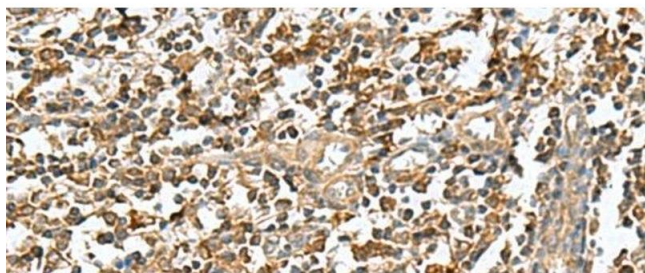
Storage Comment: Store at -20°C. Avoid freeze / thaw cycles.

## Images



### Immunohistochemistry (Paraffin-embedded Sections)

**Image 1.** Immunohistochemistry of paraffin-embedded Human colorectal cancer tissue using RAB23 Polyclonal Antibody at dilution of 1:50(x200)



#### Immunohistochemistry (Paraffin-embedded Sections)

**Image 2.** Immunohistochemistry of paraffin-embedded Human tonsil tissue using RAB23 Polyclonal Antibody at dilution of 1:50(x200)