



[Go to Product page](#)

Datasheet for ABIN725405

anti-PIK3R1 antibody (AA 501-600)

5 Images

7 Publications

Overview

Quantity:	100 µL
Target:	PIK3R1 (PI3K p85a)
Binding Specificity:	AA 501-600
Reactivity:	Human, Mouse, Rat, Rabbit
Host:	Rabbit
Clonality:	Polyclonal
Conjugate:	This PIK3R1 antibody is un-conjugated
Application:	Western Blotting (WB), ELISA, Immunohistochemistry (Paraffin-embedded Sections) (IHC (p)), Flow Cytometry (FACS), Immunofluorescence (Paraffin-embedded Sections) (IF (p)), Immunofluorescence (Cultured Cells) (IF (cc)), Immunohistochemistry (Frozen Sections) (IHC (fro))

Product Details

Immunogen:	KLH conjugated synthetic peptide derived from human PI3 kinase p85 subunit alpha
Isotype:	IgG
Cross-Reactivity:	Human, Mouse, Rabbit, Rat
Predicted Reactivity:	Dog,Cow,Horse,Chicken
Purification:	Purified by Protein A.

Target Details

Target:	PIK3R1 (PI3K p85a)
---------	--------------------

Target Details

Alternative Name:	PI3 kinase p85 alpha subunit (PI3K p85a Products)
Background:	<p>Synonyms: p85, AGM7, GRB1, IMD36, p85-ALPHA, Phosphatidylinositol 3-kinase regulatory subunit alpha, PI3-kinase regulatory subunit alpha, PI3K regulatory subunit alpha, PtdIns-3-kinase regulatory subunit alpha, Phosphatidylinositol 3-kinase 85 kDa regulatory subunit alpha, PI3-kinase subunit p85-alpha, PtdIns-3-kinase regulatory subunit p85-alpha, PIK3R1</p> <p>Background: Binds to activated (phosphorylated) protein-Tyr kinases, through its SH2 domain, and acts as an adapter, mediating the association of the p11 catalytic unit to the plasma membrane. Necessary for the insulin-stimulated increase in glucose uptake and glycogen synthesis in insulin-sensitive tissues. Plays an important role in signaling in response to FGFR1, FGFR2, FGFR3, FGFR4, KITLG/SCF, KIT, PDGFRA and PDGFRB. Likewise, plays a role in ITGB2 signaling.</p>
Gene ID:	5295
UniProt:	P27986
Pathways:	TCR Signaling , Response to Growth Hormone Stimulus , Regulation of Muscle Cell Differentiation , Skeletal Muscle Fiber Development , Hepatitis C , Protein targeting to Nucleus , VEGF Signaling , BCR Signaling , Warburg Effect

Application Details

Application Notes:	WB 1:300-5000 ELISA 1:500-1000 FCM 1:20-100 IHC-P 1:200-400 IHC-F 1:100-500 IF(IHC-P) 1:50-200 IF(IHC-F) 1:50-200 IF(ICC) 1:50-200
Restrictions:	For Research Use only

Handling

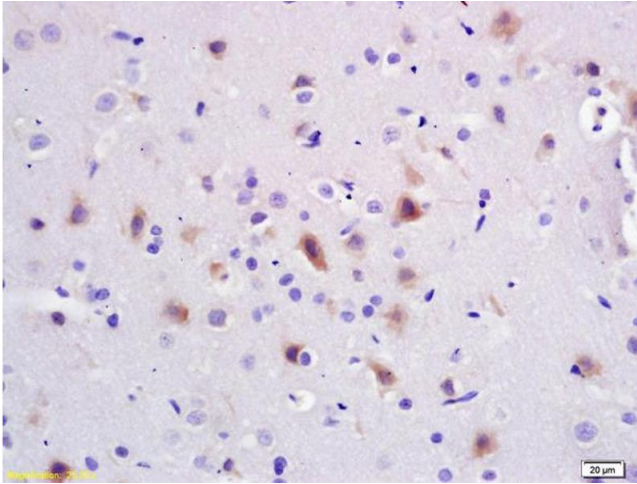
Format:	Liquid
Concentration:	1 µg/µL
Buffer:	0.01M TBS(pH 7.4) with 1 % BSA, 0.02 % Proclin300 and 50 % Glycerol.

Handling

Preservative:	ProClin
Precaution of Use:	This product contains ProClin: a POISONOUS AND HAZARDOUS SUBSTANCE, which should be handled by trained staff only.
Storage:	4 °C,-20 °C
Storage Comment:	Shipped at 4°C. Store at -20°C for one year. Avoid repeated freeze/thaw cycles.
Expiry Date:	12 months

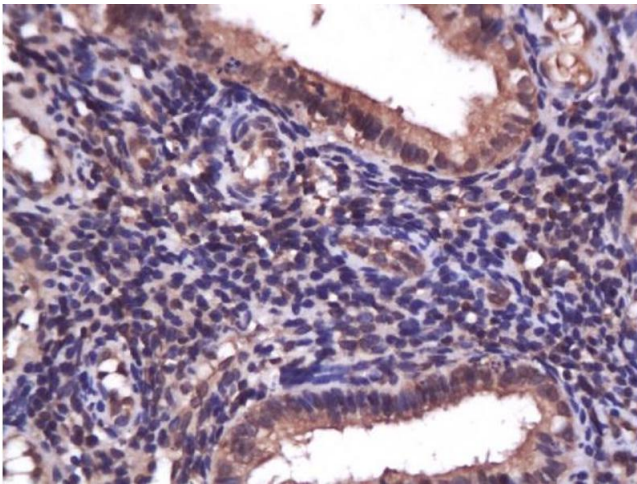
Publications

- Product cited in:
- Wang, Wang, Zhang, Lin, Liu, Xiao, Xiao, Wang: "Defective insulin signaling and the protective effects of dimethyldiguanide during follicular development in the ovaries of polycystic ovary syndrome." in: **Molecular medicine reports**, Vol. 16, Issue 6, pp. 8164-8170, (2017) ([PubMed](#)).
- An, Lv, Tian, He, Ling: "Role of the PTEN/PI3K/VEGF pathway in the development of Kawasaki disease." in: **Experimental and therapeutic medicine**, Vol. 11, Issue 4, pp. 1318-1322, (2016) ([PubMed](#)).
- Sun, Yang, Luo, Wang, Chen, Zhang, Wang, Li: "Thyroid hormone inhibits the proliferation of piglet Sertoli cell via PI3K signaling pathway." in: **Theriogenology**, (2014) ([PubMed](#)).
- Yang, Hui, Yuqin, Jie, Shuai, Tiezhu, Wei: "Effect of saw palmetto extract on PI3K cell signaling transduction in human glioma." in: **Experimental and therapeutic medicine**, Vol. 8, Issue 2, pp. 563-566, (2014) ([PubMed](#)).
- Xu, Huang, Xie, Lin, Guo, Zhuang, Lin, Zhou, Li, Huang, Wei, Man, Zhang: "The expression of cytoglobin as a prognostic factor in gliomas: a retrospective analysis of 88 patients." in: **BMC cancer**, Vol. 13, pp. 247, (2013) ([PubMed](#)).
- There are more publications referencing this product on: [Product page](#)



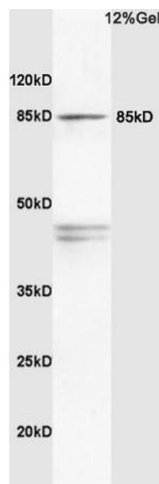
Immunohistochemistry

Image 1. Formalin-fixed and paraffin embedded rat brain labeled with Anti-PI3K/PI3 kinase p85 alpha subunit Polyclonal Antibody, Unconjugated (ABIN725405) at 1:200 followed by conjugation to the secondary antibody and DAB staining.



Immunohistochemistry

Image 2. Formalin-fixed and paraffin embedded human endometrium carcinoma labeled with Anti-PI3K/PI3 kinase p85 alpha subunit Polyclonal Antibody, Unconjugated (ABIN725405) at 1:200 followed by conjugation to the secondary antibody and DAB staining.



SDS-PAGE

Image 3. Rat brain lysates probed with Anti PI3K/PI3 kinase p85 alpha subunit Polyclonal Antibody, Unconjugated (ABIN725405) at 1:200 in 4 °C. Followed by conjugation to secondary antibody at 1:3000 90min in 37 °C. Predicted band 80kD. Observed band size: 85kD.

Please check the [product details page](#) for more images. Overall 5 images are available for ABIN725405.