



[Go to Product page](#)

Datasheet for ABIN7254106
anti-TBCC antibody

1 Image

Overview

Quantity:	200 µL
Target:	TBCC
Reactivity:	Human
Host:	Rabbit
Clonality:	Polyclonal
Conjugate:	This TBCC antibody is un-conjugated
Application:	ELISA, Immunohistochemistry (IHC)

Product Details

Immunogen:	Fusion protein of human TBCC
Isotype:	IgG
Characteristics:	Polyclonal Antibody
Purification:	Antigen affinity purification

Target Details

Target:	TBCC
Alternative Name:	TBCC (TBCC Products)
Background:	Cofactor C is one of four proteins (cofactors A, D, E, and C) involved in the pathway leading to correctly folded beta-tubulin from folding intermediates. Cofactors A and D are believed to play a role in capturing and stabilizing beta-tubulin intermediates in a quasi-native confirmation. Cofactor E binds to the cofactor D/beta-tubulin complex, interaction with cofactor C then

Target Details

causes the release of beta-tubulin polypeptides that are committed to the native state.

UniProt: [Q15814](#)

Application Details

Application Notes: IHC 1:100-1:200, ELISA 1:5000-1:10000

Restrictions: For Research Use only

Handling

Format: Liquid

Concentration: 1.2 mg/mL

Buffer: PBS with 0.05 % Sodium azide and 40 % Glycerol, pH 7.4

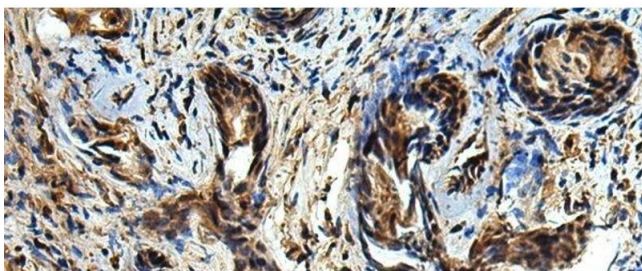
Preservative: Sodium azide

Precaution of Use: This product contains Sodium azide: a POISONOUS AND HAZARDOUS SUBSTANCE which should be handled by trained staff only.

Storage: -20 °C

Storage Comment: Store at -20°C. Avoid freeze / thaw cycles.

Images



Immunohistochemistry (Paraffin-embedded Sections)

Image 1. Immunohistochemistry of paraffin-embedded Human prostate cancer tissue using TBCC Polyclonal Antibody at dilution of 1:80(x200)