

Datasheet for ABIN7254112

anti-ASNA1 antibody[Go to Product page](#)**1** Image

Overview

Quantity:	200 µL
Target:	ASNA1
Reactivity:	Human, Mouse
Host:	Rabbit
Clonality:	Polyclonal
Conjugate:	This ASNA1 antibody is un-conjugated
Application:	ELISA, Immunohistochemistry (IHC)

Product Details

Immunogen:	Fusion protein of human ASNA1
Isotype:	IgG
Characteristics:	Polyclonal Antibody
Purification:	Antigen affinity purification

Target Details

Target:	ASNA1
Alternative Name:	ASNA1 (ASNA1 Products)
Background:	ASNA1 (also known as TRC40) is a highly conserved ATPase involved in efflux of arsenite and antimonite. Reduced ASNA1 expression is associated with significant inhibition of cell growth, increased apoptosis and increased sensitivity to cisplatin and arsenite. Thus ASNA1 is proposed to be a target to overcome resistance to cancer chemotherapy. In addition, ASNA1

Target Details

has been identified as an ER targeting factor for tail-anchored proteins in the posttranslational membrane insertion pathway.

UniProt: [O43681](#)

Pathways: [Positive Regulation of Peptide Hormone Secretion](#)

Application Details

Application Notes: IHC 1:50-1:200, ELISA 1:5000-1:10000

Restrictions: For Research Use only

Handling

Format: Liquid

Concentration: 1.26 mg/mL

Buffer: PBS with 0.05 % Sodium azide and 40 % Glycerol, pH 7.4

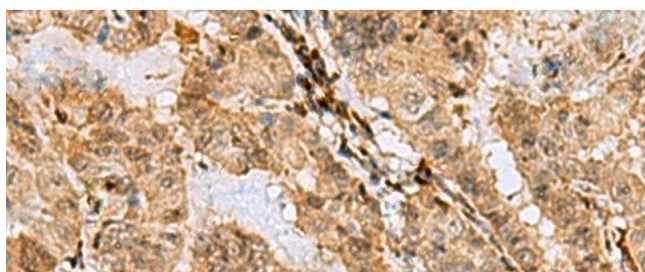
Preservative: Sodium azide

Precaution of Use: This product contains Sodium azide: a POISONOUS AND HAZARDOUS SUBSTANCE which should be handled by trained staff only.

Storage: -20 °C

Storage Comment: Store at -20°C. Avoid freeze / thaw cycles.

Images



Immunohistochemistry (Paraffin-embedded Sections)

Image 1. Immunohistochemistry of paraffin-embedded Human thyroid cancer tissue using ASNA1 Polyclonal Antibody at dilution of 1:70(x200)