

Datasheet for ABIN7254154

anti-PPM1K antibody

2 Images

[Go to Product page](#)

Overview

Quantity:	200 µL
Target:	PPM1K
Reactivity:	Human, Mouse
Host:	Rabbit
Clonality:	Polyclonal
Conjugate:	This PPM1K antibody is un-conjugated
Application:	ELISA, Immunohistochemistry (IHC)

Product Details

Immunogen:	Fusion protein of human PPM1K
Isotype:	IgG
Characteristics:	Polyclonal Antibody
Purification:	Antigen affinity purification

Target Details

Target:	PPM1K
Alternative Name:	PPM1K (PPM1K Products)
Background:	This gene encodes a member of the PPM family of Mn ²⁺ /Mg ²⁺ -dependent protein phosphatases. The encoded protein, essential for cell survival and development, is targeted to the mitochondria where it plays a key role in regulation of the mitochondrial permeability transition pore. PPM1K (Protein Phosphatase, Mg ²⁺ /Mn ²⁺ Dependent 1K) is a Protein Coding

Target Details

gene. Diseases associated with PPM1K include Maple Syrup Urine Disease, Mild Variant and Intermediate Maple Syrup Urine Disease. Among its related pathways are Valine, leucine and isoleucine degradation and Viral mRNA Translation. GO annotations related to this gene include protein serine/threonine phosphatase activity. An important paralog of this gene is PPM1E.

UniProt: [Q8N3J5](#)

Application Details

Application Notes: IHC 1:50-1:100, ELISA 1:5000-1:10000

Restrictions: For Research Use only

Handling

Format: Liquid

Concentration: 0.78 mg/mL

Buffer: PBS with 0.05 % Sodium azide and 40 % Glycerol, pH 7.4

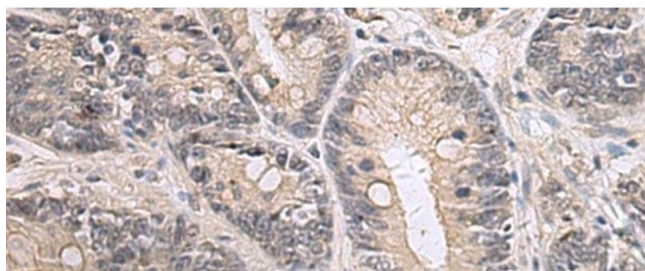
Preservative: Sodium azide

Precaution of Use: This product contains Sodium azide: a POISONOUS AND HAZARDOUS SUBSTANCE which should be handled by trained staff only.

Storage: -20 °C

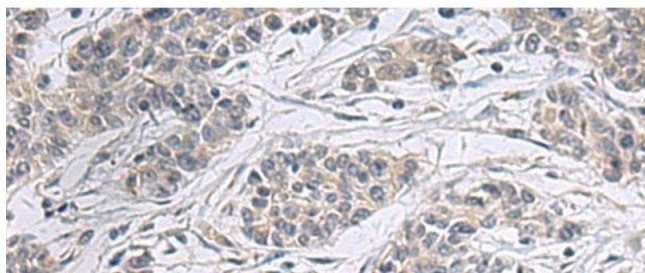
Storage Comment: Store at -20°C. Avoid freeze / thaw cycles.

Images



Immunohistochemistry (Paraffin-embedded Sections)

Image 1. Immunohistochemistry of paraffin-embedded Human gastric cancer tissue using PPM1K Polyclonal Antibody at dilution of 1:55(x200)



Immunohistochemistry (Paraffin-embedded Sections)

Image 2. Immunohistochemistry of paraffin-embedded Human colorectal cancer tissue using PPM1K Polyclonal Antibody at dilution of 1:55(x200)