



[Go to Product page](#)

Datasheet for ABIN7254163

anti-LYAR antibody

1 Image

Overview

Quantity:	200 µL
Target:	LYAR
Reactivity:	Human
Host:	Rabbit
Clonality:	Polyclonal
Conjugate:	This LYAR antibody is un-conjugated
Application:	ELISA, Immunohistochemistry (IHC)

Product Details

Immunogen:	Fusion protein of human LYAR
Isotype:	IgG
Characteristics:	Polyclonal Antibody
Purification:	Antigen affinity purification

Target Details

Target:	LYAR
Alternative Name:	LYAR (LYAR Products)
Target Type:	Antibody
Background:	LYAR (Ly1 Antibody Reactive) is a Protein Coding gene. GO annotations related to this gene include poly(A) RNA binding.

Target Details

UniProt: [Q9NX58](#)

Application Details

Application Notes: IHC 1:50-1:200, ELISA 1:5000-1:10000

Restrictions: For Research Use only

Handling

Format: Liquid

Concentration: 1.08 mg/mL

Buffer: PBS with 0.05 % Sodium azide and 40 % Glycerol, pH 7.4

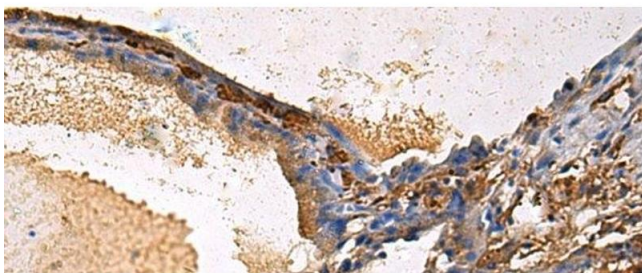
Preservative: Sodium azide

Precaution of Use: This product contains Sodium azide: a POISONOUS AND HAZARDOUS SUBSTANCE which should be handled by trained staff only.

Storage: -20 °C

Storage Comment: Store at -20°C. Avoid freeze / thaw cycles.

Images



Immunohistochemistry (Paraffin-embedded Sections)

Image 1. Immunohistochemistry of paraffin-embedded Human thyroid cancer tissue using LYAR Polyclonal Antibody at dilution of 1:60(x200)