



Datasheet for ABIN7254184 anti-PRKCSH antibody



[Go to Product page](#)

3 Images

Overview

Quantity:	200 µL
Target:	PRKCSH
Reactivity:	Human, Mouse
Host:	Rabbit
Clonality:	Polyclonal
Conjugate:	This PRKCSH antibody is un-conjugated
Application:	Western Blotting (WB), ELISA, Immunohistochemistry (IHC)

Product Details

Immunogen:	Fusion protein of human PRKCSH
Isotype:	IgG
Characteristics:	Polyclonal Antibody
Purification:	Antigen affinity purification

Target Details

Target:	PRKCSH
Alternative Name:	PRKCSH (PRKCSH Products)
Background:	This gene encodes the beta-subunit of glucosidase II, an N-linked glycan-processing enzyme in the endoplasmic reticulum. The encoded protein is an acidic phosphoprotein known to be a substrate for protein kinase C. Mutations in this gene have been associated with the autosomal dominant polycystic liver disease. Alternative splicing results in multiple transcript

Target Details

variants.PRKCSH (Protein Kinase C Substrate 80K-H) is a Protein Coding gene. Diseases associated with PRKCSH include Polycystic Liver Disease and Polycystic Kidney And Hepatic Disease. Among its related pathways are Advanced glycosylation endproduct receptor signaling and Innate Immune System. GO annotations related to this gene include calcium ion binding and ion channel binding.

Molecular Weight: Observed_MW: Refer to figures
Calculated_MW: 59 kDa

UniProt: [P14314](#)

Pathways: [Cellular Glucan Metabolic Process](#), [Methionine Biosynthetic Process](#)

Application Details

Application Notes: WB 1:500-1:2000, IHC 1:100-1:300, ELISA 1:5000-1:10000

Restrictions: For Research Use only

Handling

Format: Liquid

Concentration: 1.32 mg/mL

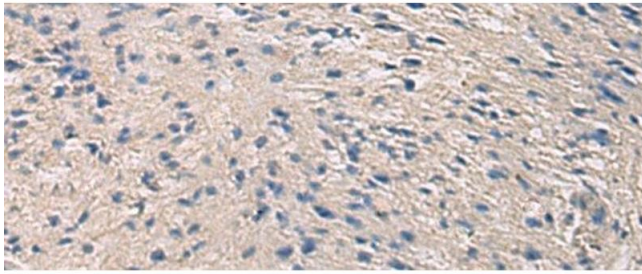
Buffer: PBS with 0.05 % Sodium azide and 40 % Glycerol, pH 7.4

Preservative: Sodium azide

Precaution of Use: This product contains Sodium azide: a POISONOUS AND HAZARDOUS SUBSTANCE which should be handled by trained staff only.

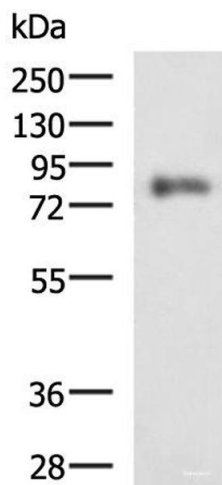
Storage: -20 °C

Storage Comment: Store at -20°C. Avoid freeze / thaw cycles.



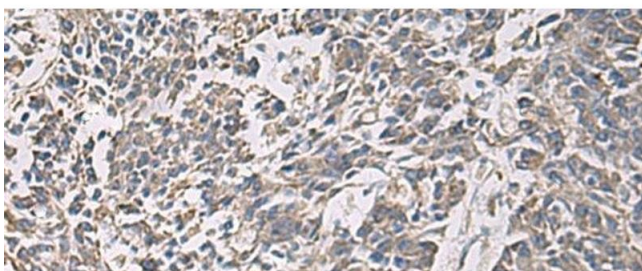
Immunohistochemistry (Paraffin-embedded Sections)

Image 1. Immunohistochemistry of paraffin-embedded Human brain tissue using PRKCSH Polyclonal Antibody at dilution of 1:90(x200)



Western Blotting

Image 2. Western blot analysis of HepG2 cell lysate using PRKCSH Polyclonal Antibody at dilution of 1:1350



Immunohistochemistry (Paraffin-embedded Sections)

Image 3. Immunohistochemistry of paraffin-embedded Human colorectal cancer tissue using PRKCSH Polyclonal Antibody at dilution of 1:90(x200)