



Datasheet for ABIN7254211
anti-SLC18A3 antibody



[Go to Product page](#)

2 Images

Overview

Quantity:	200 µL
Target:	SLC18A3
Reactivity:	Human
Host:	Rabbit
Clonality:	Polyclonal
Conjugate:	This SLC18A3 antibody is un-conjugated
Application:	Immunofluorescence (IF), ELISA

Product Details

Immunogen:	Synthetic peptide of human SLC18A3
Isotype:	IgG
Characteristics:	Polyclonal Antibody
Purification:	Antigen affinity purification

Target Details

Target:	SLC18A3
Alternative Name:	SLC18A3 (SLC18A3 Products)
Background:	This gene is a member of the vesicular amine transporter family. The encoded transmembrane protein transports acetylcholine into secretory vesicles for release into the extracellular space. Acetylcholine transport utilizes a proton gradient established by a vacuolar ATPase. This gene is located within the first intron of the choline acetyltransferase gene.

Target Details

UniProt: [Q16572](#)

Application Details

Application Notes: IF 1: 50-1:200, ELISA 1:5000-1:60000

Restrictions: For Research Use only

Handling

Format: Liquid

Concentration: 2.8 mg/mL

Buffer: PBS with 0.05 % Sodium azide and 40 % Glycerol, pH 7.4

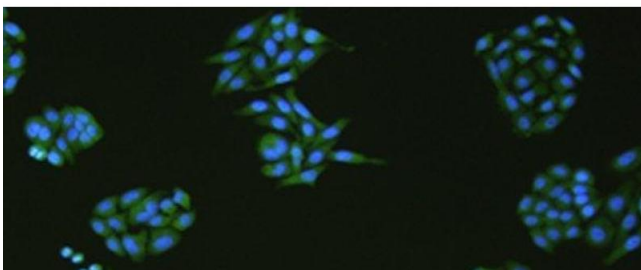
Preservative: Sodium azide

Precaution of Use: This product contains Sodium azide: a POISONOUS AND HAZARDOUS SUBSTANCE which should be handled by trained staff only.

Storage: -20 °C

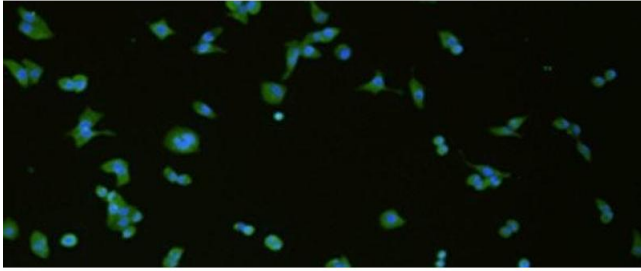
Storage Comment: Store at -20°C. Avoid freeze / thaw cycles.

Images



Immunofluorescence

Image 1. Immunofluorescence analysis of HepG2 cell using SLC18A3 Polyclonal Antibody at dilution of 1:50



Immunofluorescence

Image 2. Immunofluorescence analysis of hela cell using SLC18A3 Polyclonal Antibody at dilution of 1:50