

Datasheet for ABIN7254217
anti-SLC17A7 antibody



[Go to Product page](#)

1 Image

Overview

Quantity:	200 µL
Target:	SLC17A7
Reactivity:	Rat, Human, Mouse
Host:	Rabbit
Clonality:	Polyclonal
Conjugate:	This SLC17A7 antibody is un-conjugated
Application:	Immunohistochemistry (IHC), ELISA

Product Details

Immunogen:	Synthetic peptide of human SLC17A7
Isotype:	IgG
Characteristics:	Polyclonal Antibody
Purification:	Antigen affinity purification

Target Details

Target:	SLC17A7
Alternative Name:	SLC17A7 (SLC17A7 Products)
Background:	The protein encoded by this gene is a vesicle-bound, sodium-dependent phosphate transporter that is specifically expressed in the neuron-rich regions of the brain. It is preferentially associated with the membranes of synaptic vesicles and functions in glutamate transport. The protein shares 82 % identity with the differentiation-associated Na-dependent inorganic

Target Details

phosphate cotransporter and they appear to form a distinct class within the Na⁺/Pi cotransporter family.

UniProt: [Q9P2U7](#)

Application Details

Application Notes: IHC 1:200-1:500, ELISA 1:5000-1:240000

Restrictions: For Research Use only

Handling

Format: Liquid

Concentration: 1.6 mg/mL

Buffer: PBS with 0.05 % Sodium azide and 40 % Glycerol, pH 7.4

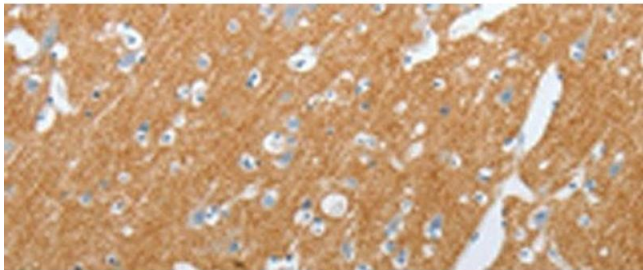
Preservative: Sodium azide

Precaution of Use: This product contains Sodium azide: a POISONOUS AND HAZARDOUS SUBSTANCE which should be handled by trained staff only.

Storage: -20 °C

Storage Comment: Store at -20°C. Avoid freeze / thaw cycles.

Images



Immunohistochemistry (Paraffin-embedded Sections)

Image 1. Immunohistochemistry of paraffin-embedded Human brain tissue using SLC17A7 Polyclonal Antibody at dilution of 1:200(x200)