



[Go to Product page](#)

Datasheet for ABIN7254256

anti-POMC antibody

3 Images

Overview

Quantity:	200 µL
Target:	POMC
Reactivity:	Human, Mouse, Rat
Host:	Rabbit
Clonality:	Polyclonal
Conjugate:	This POMC antibody is un-conjugated
Application:	Western Blotting (WB), ELISA, Immunohistochemistry (IHC)

Product Details

Immunogen:	Synthetic peptide of human POMC
Isotype:	IgG
Characteristics:	Polyclonal Antibody
Purification:	Antigen affinity purification

Target Details

Target:	POMC
Alternative Name:	POMC (POMC Products)
Background:	Pro-opiomelanocortin(POMC) is a prohormone that encodes multiple smaller peptide hormones within its structure. POMC plays important roles in many pathological and physiological processes,including regulating energy metabolism,immune reactions,and sexual functions. POMC expression differs quantitatively and qualitatively among most normal tissues.

Target Details

The large molecule of POMC is the source of several important biologically active substances. POMC can be cleaved enzymatically into the following peptides: d NPP, γ -MSH,ACTH, α -MSH,CLIP,Lipotropin β ,Lipotropin γ , β -MSH, β endorphin and Met-enkephalin.

Molecular Weight: Observed_MW: Refer to figures
Calculated_MW: 29 kDa

UniProt: [P01189](#)

Pathways: [Metabolism of Steroid Hormones and Vitamin D](#), [Peptide Hormone Metabolism](#), [Hormone Activity](#), [Feeding Behaviour](#)

Application Details

Application Notes: WB 1:500-1:2000, IHC 1:25-1:50, ELISA 1:5000-1:10000

Restrictions: For Research Use only

Handling

Format: Liquid

Concentration: 0.96 mg/mL

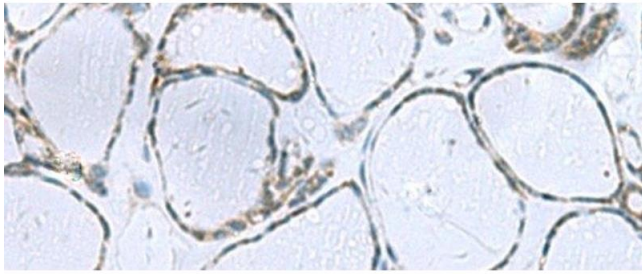
Buffer: PBS with 0.05 % Sodium azide and 40 % Glycerol, pH 7.4

Preservative: Sodium azide

Precaution of Use: This product contains Sodium azide: a POISONOUS AND HAZARDOUS SUBSTANCE which should be handled by trained staff only.

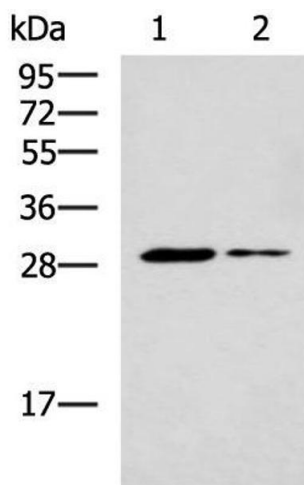
Storage: -20 °C

Storage Comment: Store at -20°C. Avoid freeze / thaw cycles.



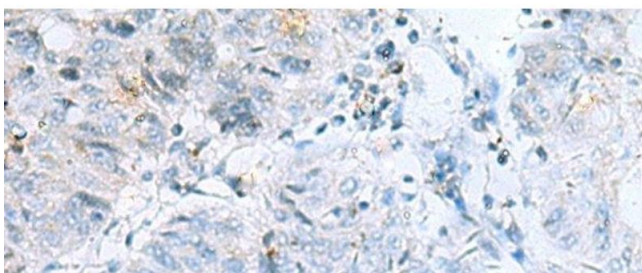
Immunohistochemistry (Paraffin-embedded Sections)

Image 1. Immunohistochemistry of paraffin-embedded Human thyroid cancer tissue using POMC Polyclonal Antibody at dilution of 1:35(x200)



Western Blotting

Image 2. Western blot analysis of Mouse liver tissue and Mouse skeletal muscle tissue lysates using POMC Polyclonal Antibody at dilution of 1:800



Immunohistochemistry (Paraffin-embedded Sections)

Image 3. Immunohistochemistry of paraffin-embedded Human colorectal cancer tissue using POMC Polyclonal Antibody at dilution of 1:35(x200)