



Datasheet for ABIN7254289 anti-P2RY6 antibody



[Go to Product page](#)

3 Images

Overview

Quantity:	200 µL
Target:	P2RY6
Reactivity:	Human, Rat, Mouse
Host:	Rabbit
Clonality:	Polyclonal
Conjugate:	This P2RY6 antibody is un-conjugated
Application:	Western Blotting (WB), ELISA, Immunohistochemistry (IHC)

Product Details

Immunogen:	Synthetic peptide of human P2RY6
Isotype:	IgG
Characteristics:	Polyclonal Antibody
Purification:	Antigen affinity purification

Target Details

Target:	P2RY6
Alternative Name:	P2RY6 (P2RY6 Products)
Background:	The product of this gene belongs to the family of G-protein coupled receptors. This family has several receptor subtypes with different pharmacological selectivity, which overlaps in some cases, for various adenosine and uridine nucleotides. This receptor is responsive to UDP, partially responsive to UTP and ADP, and not responsive to ATP. Four transcript variants

Target Details

encoding the same isoform have been identified for this gene

Molecular Weight: Observed_MW: Refer to figures
Calculated_MW: 36 kDa

UniProt: [Q15077](#)

Pathways: [Smooth Muscle Cell Migration](#)

Application Details

Application Notes: WB 1:500-1:2000, IHC 1:50-1:200, ELISA 1:1000-1:5000

Restrictions: For Research Use only

Handling

Format: Liquid

Concentration: 0.4 mg/mL

Buffer: PBS with 0.05 % Sodium azide and 40 % Glycerol, pH 7.4

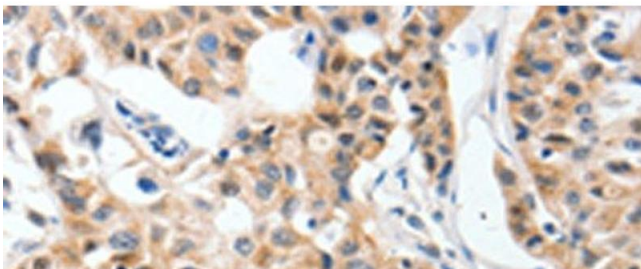
Preservative: Sodium azide

Precaution of Use: This product contains Sodium azide: a POISONOUS AND HAZARDOUS SUBSTANCE which should be handled by trained staff only.

Storage: -20 °C

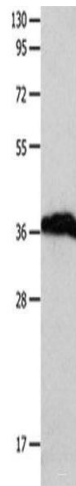
Storage Comment: Store at -20°C. Avoid freeze / thaw cycles.

Images



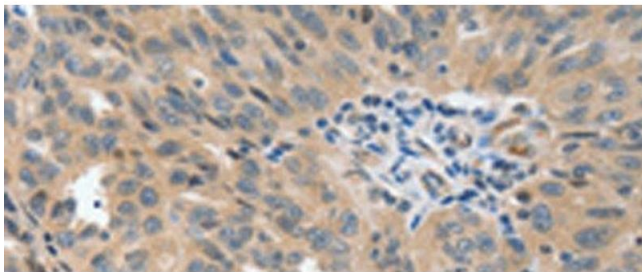
Immunohistochemistry (Paraffin-embedded Sections)

Image 1. Immunohistochemistry of paraffin-embedded Human lung cancer tissue using P2RY6 Polyclonal Antibody at dilution of 1:40(x200)



Western Blotting

Image 2. Western blot analysis of Human brain malignant glioma tissue using P2RY6 Polyclonal Antibody at dilution of 1:550



Immunohistochemistry (Paraffin-embedded Sections)

Image 3. Immunohistochemistry of paraffin-embedded Human ovarian cancer tissue using P2RY6 Polyclonal Antibody at dilution of 1:40(x200)