

Datasheet for ABIN7254316

anti-MCAM antibody**3** Images[Go to Product page](#)

Overview

Quantity:	200 µL
Target:	MCAM
Reactivity:	Human
Host:	Rabbit
Clonality:	Polyclonal
Conjugate:	This MCAM antibody is un-conjugated
Application:	Immunohistochemistry (IHC), Western Blotting (WB), ELISA

Product Details

Immunogen:	Synthetic peptide of human MCAM
Isotype:	IgG
Characteristics:	Polyclonal Antibody
Purification:	Antigen affinity purification

Target Details

Target:	MCAM
Alternative Name:	MCAM (MCAM Products)
Background:	CD146,also known as melanoma cell adhesion molecule (MCAM) or MUC18,originally identified as a biomarker of melanoma progression,is a transmembrane glycoprotein belonging to the immunoglobulin (Ig) superfamily . Structurally,it consists of five Ig domains,a transmembrane domain,and a cytoplasmic region. In normal adult tissue,CD146 is primarily expressed by

Target Details

vascular endothelium and smooth muscle. CD146 is a key cell adhesion protein in vascular endothelial cell activity and angiogenesis, and has been used as marker of circulating endothelium cells (CECs) .

Molecular Weight: Observed_MW: Refer to figures
Calculated_MW: 72 kDa

UniProt: [P43121](#)

Application Details

Application Notes: WB 1:500-1:2000, IHC 1:40-1:200, ELISA 1:5000-1:10000

Restrictions: For Research Use only

Handling

Format: Liquid

Concentration: 1.14 mg/mL

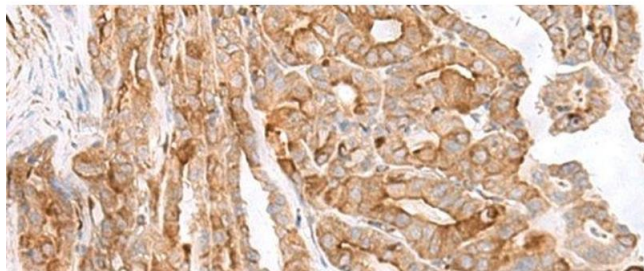
Buffer: PBS with 0.05 % Sodium azide and 40 % Glycerol, pH 7.4

Preservative: Sodium azide

Precaution of Use: This product contains Sodium azide: a POISONOUS AND HAZARDOUS SUBSTANCE which should be handled by trained staff only.

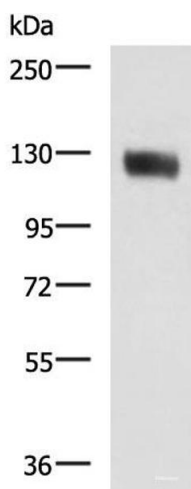
Storage: -20 °C

Storage Comment: Store at -20°C. Avoid freeze / thaw cycles.



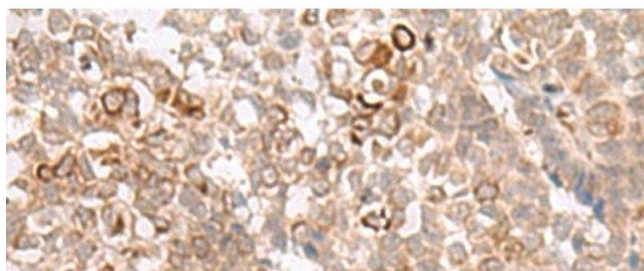
Immunohistochemistry (Paraffin-embedded Sections)

Image 1. Immunohistochemistry of paraffin-embedded Human thyroid cancer tissue using MCAM Polyclonal Antibody at dilution of 1:40(x200)



Western Blotting

Image 2. Western blot analysis of Human leiomyosarcoma tissue lysate using MCAM Polyclonal Antibody at dilution of 1:400



Immunohistochemistry (Paraffin-embedded Sections)

Image 3. Immunohistochemistry of paraffin-embedded Human ovarian cancer tissue using MCAM Polyclonal Antibody at dilution of 1:40(x200)