

Datasheet for ABIN7254325

anti-LPPR5 antibody**2** Images[Go to Product page](#)

Overview

Quantity:	200 µL
Target:	LPPR5
Reactivity:	Human, Mouse
Host:	Rabbit
Clonality:	Polyclonal
Conjugate:	This LPPR5 antibody is un-conjugated
Application:	Western Blotting (WB), ELISA, Immunohistochemistry (IHC)

Product Details

Immunogen:	Synthetic peptide of human PLPPR5
Isotype:	IgG
Characteristics:	Polyclonal Antibody
Purification:	Antigen affinity purification

Target Details

Target:	LPPR5
Alternative Name:	PLPPR5 (LPPR5 Products)
Background:	The protein encoded by this gene is a type 2 member of the phosphatidic acid phosphatase (PAP) family. All type 2 members of this protein family contain 6 transmembrane regions, and a consensus N-glycosylation site. PAPs convert phosphatidic acid to diacylglycerol, and function in de novo synthesis of glycerolipids as well as in receptor-activated signal transduction

Target Details

mediated by phospholipase D. Alternate transcriptional splice variants, encoding different isoforms, have been characterized.

Molecular Weight: Observed_MW: Refer to figures
Calculated_MW: 36 kDa

UniProt: [Q32ZL2](#)

Application Details

Application Notes: WB 1:1000-1:5000, IHC 1:100-1:200, ELISA 1:5000-1:10000

Restrictions: For Research Use only

Handling

Format: Liquid

Concentration: 1.8 mg/mL

Buffer: PBS with 0.05 % Sodium azide and 40 % Glycerol, pH 7.4

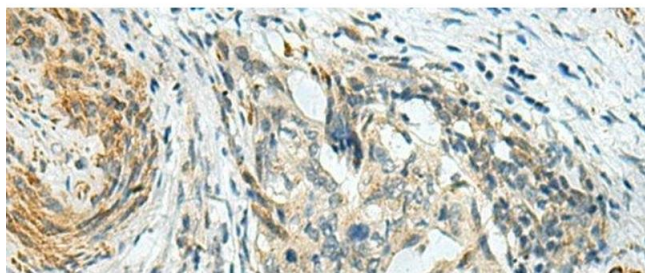
Preservative: Sodium azide

Precaution of Use: This product contains Sodium azide: a POISONOUS AND HAZARDOUS SUBSTANCE which should be handled by trained staff only.

Storage: -20 °C

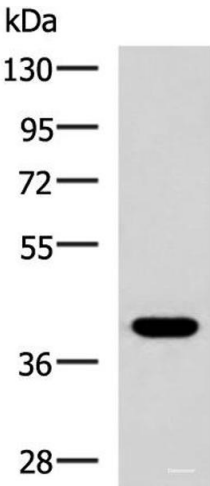
Storage Comment: Store at -20°C. Avoid freeze / thaw cycles.

Images



Immunohistochemistry (Paraffin-embedded Sections)

Image 1. Immunohistochemistry of paraffin-embedded Human cervical cancer tissue using PLPPR5 Polyclonal Antibody at dilution of 1:120(x200)



Western Blotting

Image 2. Western blot analysis of HepG2 cell lysate using PLPPR5 Polyclonal Antibody at dilution of 1:1500