

Datasheet for ABIN7254340

anti-HTRA1 antibody

3 Images

[Go to Product page](#)

Overview

Quantity:	200 µL
Target:	HTRA1
Reactivity:	Human, Mouse, Rat
Host:	Rabbit
Clonality:	Polyclonal
Conjugate:	This HTRA1 antibody is un-conjugated
Application:	Western Blotting (WB), Immunohistochemistry (IHC), ELISA

Product Details

Immunogen:	Synthetic peptide of human HTRA1
Isotype:	IgG
Characteristics:	Polyclonal Antibody
Purification:	Antigen affinity purification

Target Details

Target:	HTRA1
Alternative Name:	HTRA1 (HTRA1 Products)
Background:	This gene encodes a member of the trypsin family of serine proteases. This protein is a secreted enzyme that is proposed to regulate the availability of insulin-like growth factors (IGFs) by cleaving IGF-binding proteins. It has also been suggested to be a regulator of cell growth. Variations in the promoter region of this gene are the cause of susceptibility to age-

Target Details

related macular degeneration type 7.

Molecular Weight: Observed_MW: Refer to figures
Calculated_MW: 51 kDa

UniProt: [Q92743](#)

Pathways: [Growth Factor Binding](#)

Application Details

Application Notes: WB 1:500-1:2000, IHC 1:40-1:200, ELISA 1:5000-1:10000

Restrictions: For Research Use only

Handling

Format: Liquid

Concentration: 0.9 mg/mL

Buffer: PBS with 0.05 % Sodium azide and 40 % Glycerol, pH 7.4

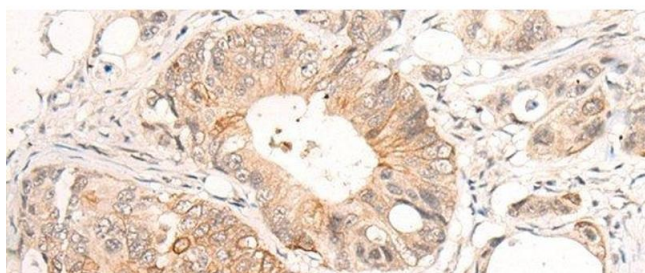
Preservative: Sodium azide

Precaution of Use: This product contains Sodium azide: a POISONOUS AND HAZARDOUS SUBSTANCE which should be handled by trained staff only.

Storage: -20 °C

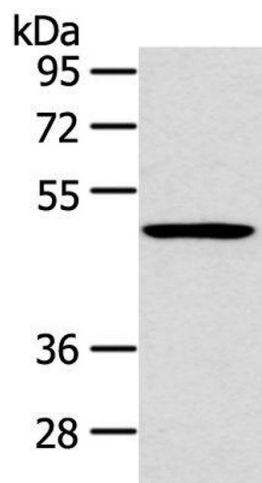
Storage Comment: Store at -20°C. Avoid freeze / thaw cycles.

Images



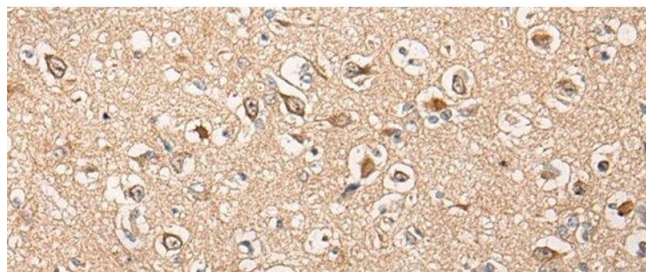
Immunohistochemistry (Paraffin-embedded Sections)

Image 1. Immunohistochemistry of paraffin-embedded Human colorectal cancer tissue using HTRA1 Polyclonal Antibody at dilution of 1:55(x200)



Western Blotting

Image 2. Western blot analysis of 231 cell using HTRA1 Polyclonal Antibody at dilution of 1:500



Immunohistochemistry (Paraffin-embedded Sections)

Image 3. Immunohistochemistry of paraffin-embedded Human brain tissue using HTRA1 Polyclonal Antibody at dilution of 1:55(x200)