

Datasheet for ABIN7254355

**anti-CLIC4 antibody**[Go to Product page](#)**1** Image

## Overview

Quantity:	200 µL
Target:	CLIC4
Reactivity:	Human, Mouse, Rat
Host:	Rabbit
Clonality:	Polyclonal
Conjugate:	This CLIC4 antibody is un-conjugated
Application:	Western Blotting (WB), ELISA

## Product Details

Immunogen:	Synthetic peptide of human CLIC4
Isotype:	IgG
Characteristics:	Polyclonal Antibody
Purification:	Antigen affinity purification

## Target Details

Target:	CLIC4
Alternative Name:	CLIC4 ( <a href="#">CLIC4 Products</a> )
Background:	Chloride channels are a diverse group of proteins that regulate fundamental cellular processes including stabilization of cell membrane potential, transepithelial transport, maintenance of intracellular pH, and regulation of cell volume. CLIC4 is a p53- and tumor necrosis factor alpha-regulated cytoplasmic and mitochondrial protein that belongs to the CLIC family of intracellular

## Target Details

chloride channels. CLICs have actions distinct from traditional cell membrane chloride channels, including formation of ion channels in intracellular organelles and roles in membrane trafficking, apoptosis, and cell differentiation.

Molecular Weight: Observed\_MW: Refer to figures  
Calculated\_MW: 29 kDa

UniProt: [Q9Y696](#)

## Application Details

Application Notes: WB 1:500-1:2000, ELISA 1:2000-1:5000

Restrictions: For Research Use only

## Handling

Format: Liquid

Concentration: 0.6 mg/mL

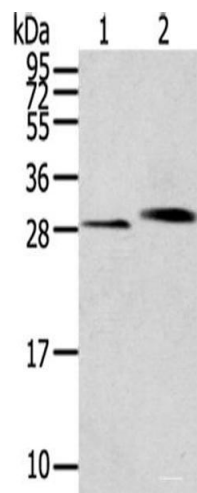
Buffer: PBS with 0.05 % Sodium azide and 40 % Glycerol, pH 7.4

Preservative: Sodium azide

Precaution of Use: This product contains Sodium azide: a POISONOUS AND HAZARDOUS SUBSTANCE which should be handled by trained staff only.

Storage: -20 °C

Storage Comment: Store at -20°C. Avoid freeze / thaw cycles.



Western Blotting

**Image 1.** Western blot analysis of Human normal kidney tissue Human liver tissue using CLIC4 Polyclonal Antibody at dilution of 1:200