

Datasheet for ABIN7254373

**anti-RHCG antibody****2** Images[Go to Product page](#)

## Overview

Quantity:	200 µL
Target:	RHCG
Reactivity:	Human
Host:	Rabbit
Clonality:	Polyclonal
Conjugate:	This RHCG antibody is un-conjugated
Application:	Western Blotting (WB), ELISA, Immunohistochemistry (IHC)

## Product Details

Immunogen:	Synthetic peptide of human RHCG
Isotype:	IgG
Characteristics:	Polyclonal Antibody
Purification:	Antigen affinity purification

## Target Details

Target:	RHCG
Alternative Name:	RHCG ( <a href="#">RHCG Products</a> )
Background:	RHCG (Rhesus blood group family type C glycoprotein), also known as RHGK (Rh glycoprotein kidney), PDRC2 (tumor-related protein DRC2) or SLC42A3, is a multi-pass membrane protein with three potential N-glycosylation sites that belongs to the Rh subfamily of the ammonium transporter family. Expressed in a wide variety of tissues with predominant expression in adult

## Target Details

and fetal kidney, RHCg localizes to the apical and/or basolateral cell membrane (depending on the species) and is believed to function as a non-erythroid, bidirectional, electroneutral ammonium transporter.

Molecular Weight: Observed\_MW: Refer to figures  
Calculated\_MW: 53 kDa

UniProt: [Q9UBD6](#)

## Application Details

Application Notes: WB 1:500-1:2000, IHC 1:25-1:50, ELISA 1:5000-1:10000

Restrictions: For Research Use only

## Handling

Format: Liquid

Concentration: 0.72 mg/mL

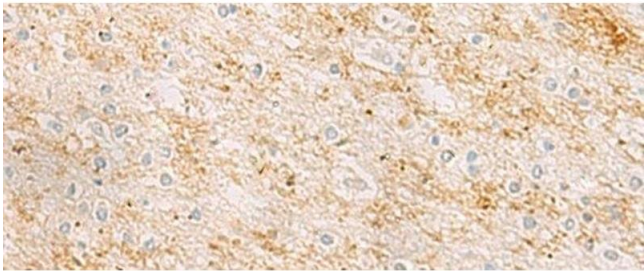
Buffer: PBS with 0.05 % Sodium azide and 40 % Glycerol, pH 7.4

Preservative: Sodium azide

Precaution of Use: This product contains Sodium azide: a POISONOUS AND HAZARDOUS SUBSTANCE which should be handled by trained staff only.

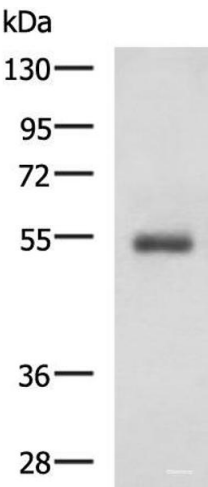
Storage: -20 °C

Storage Comment: Store at -20°C. Avoid freeze / thaw cycles.



Immunohistochemistry (Paraffin-embedded Sections)

**Image 1.** Immunohistochemistry of paraffin-embedded Human brain tissue using RHCG Polyclonal Antibody at dilution of 1:25(x200)



Western Blotting

**Image 2.** Western blot analysis of Human 2-3 grade invasive ductal breast tissue lysate using RHCG Polyclonal Antibody at dilution of 1:600