

Datasheet for ABIN7254379

**anti-SERINC4 antibody**[Go to Product page](#)**1** Image

## Overview

Quantity:	200 µL
Target:	SERINC4
Reactivity:	Human
Host:	Rabbit
Clonality:	Polyclonal
Conjugate:	This SERINC4 antibody is un-conjugated
Application:	Western Blotting (WB), ELISA

## Product Details

Immunogen:	Synthetic peptide of human SERINC4
Isotype:	IgG
Characteristics:	Polyclonal Antibody
Purification:	Antigen affinity purification

## Target Details

Target:	SERINC4
Alternative Name:	SERINC4 ( <a href="#">SERINC4 Products</a> )
Background:	SERINC4 (serine incorporator 4) is a 518 amino acid multi-pass membrane protein that belongs to the TDE1 family. The SERINC4 protein incorporates a polar amino acid serine into membranes and facilitates the synthesis of two serine-derived lipids, phosphatidylserine and sphingolipids. Because SERINC proteins contain 11 transmembrane segments resembling

## Target Details

amino acid transporters, SERINC4 may also function as an L-serine transporter by carrying serine molecules into the hydrophobic milieu of membrane lipid bilayers.

Molecular Weight: Observed\_MW: Refer to figures  
Calculated\_MW: 57 kDa

UniProt: [A6NH21](#)

## Application Details

Application Notes: WB 1:500-1:2000, ELISA 1:2000-1:5000

Restrictions: For Research Use only

## Handling

Format: Liquid

Concentration: 0.9 mg/mL

Buffer: PBS with 0.05 % Sodium azide and 40 % Glycerol, pH 7.4

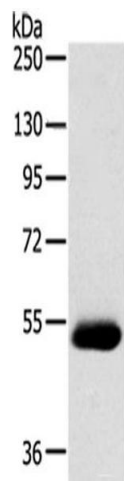
Preservative: Sodium azide

Precaution of Use: This product contains Sodium azide: a POISONOUS AND HAZARDOUS SUBSTANCE which should be handled by trained staff only.

Storage: -20 °C

Storage Comment: Store at -20°C. Avoid freeze / thaw cycles.

## Images



### Western Blotting

**Image 1.** Western blot analysis of Human breast infiltrative duct tissue using SERINC4 Polyclonal Antibody at dilution of 1:200