

Datasheet for ABIN7254388

**anti-T-Box 1 antibody****2** Images[Go to Product page](#)

## Overview

|              |  |
|--------------|--|
| Quantity:    | 200 µL   |
| Target:      | T-Box 1 (TBX1)   |
| Reactivity:  | Human  |
| Host:        | Rabbit   |
| Clonality:   | Polyclonal   |
| Conjugate:   | This T-Box 1 antibody is un-conjugated                   |
| Application: | Western Blotting (WB), ELISA, Immunohistochemistry (IHC) |

## Product Details

|                  |                                 |
|------------------|---------------------------------|
| Immunogen:       | Synthetic peptide of human TBX1 |
| Isotype:         | IgG                             |
| Characteristics: | Polyclonal Antibody             |
| Purification:    | Antigen affinity purification   |

## Target Details

|                   |  |
|-------------------|--|
| Target:           | T-Box 1 (TBX1)   |
| Alternative Name: | TBX1 ( <a href="#">TBX1 Products</a> )   |
| Background:       | This gene is a member of a phylogenetically conserved family of genes that share a common DNA-binding domain, the T-box. T-box genes encode transcription factors involved in the regulation of developmental processes. This gene product shares 98 % amino acid sequence identity with the mouse ortholog. DiGeorge syndrome (DGS)/velocardiofacial syndrome (VCFS), |

## Target Details

a common congenital disorder characterized by neural-crest-related developmental defects, has been associated with deletions of chromosome 22q11.2, where this gene has been mapped. Studies using mouse models of DiGeorge syndrome suggest a major role for this gene in the molecular etiology of DGS/VCFS. Several alternatively spliced transcript variants encoding different isoforms have been described for this gene.

Molecular Weight: Observed\_MW: Refer to figures  
Calculated\_MW: 43 kDa

UniProt: [O43435](#)

Pathways: [Retinoic Acid Receptor Signaling Pathway](#), [Sensory Perception of Sound](#), [Cellular Response to Molecule of Bacterial Origin](#), [Regulation of Muscle Cell Differentiation](#)

## Application Details

Application Notes: WB 1:500-1:2000, IHC 1:25-1:100, ELISA 1:5000-1:10000

Restrictions: For Research Use only

## Handling

Format: Liquid

Concentration: 0.7 mg/mL

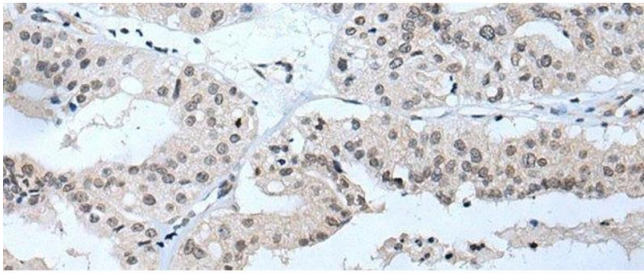
Buffer: PBS with 0.05 % Sodium azide and 40 % Glycerol, pH 7.4

Preservative: Sodium azide

Precaution of Use: This product contains Sodium azide: a POISONOUS AND HAZARDOUS SUBSTANCE which should be handled by trained staff only.

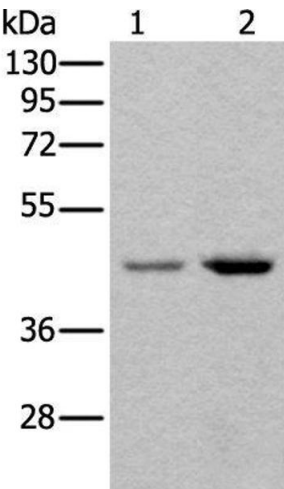
Storage: -20 °C

Storage Comment: Store at -20°C. Avoid freeze / thaw cycles.



Immunohistochemistry (Paraffin-embedded Sections)

**Image 1.** Immunohistochemistry of paraffin-embedded Human liver cancer tissue using TBX1 Polyclonal Antibody at dilution of 1:40(x200)



Western Blotting

**Image 2.** Western blot analysis of 293T and Hela cell lysates using TBX1 Polyclonal Antibody at dilution of 1:400