

Datasheet for ABIN7254397

anti-CD39 antibody**2** Images[Go to Product page](#)

Overview

Quantity:	200 µL
Target:	CD39 (ENTPD1)
Reactivity:	Human, Mouse, Rat
Host:	Rabbit
Clonality:	Polyclonal
Conjugate:	This CD39 antibody is un-conjugated
Application:	Immunohistochemistry (IHC), ELISA

Product Details

Immunogen:	Synthetic peptide of human ENTDP1
Isotype:	IgG
Characteristics:	Polyclonal Antibody
Purification:	Antigen affinity purification

Target Details

Target:	CD39 (ENTPD1)
Alternative Name:	ENTPD1 (ENTPD1 Products)
Background:	ENTPD1(Ectonucleoside triphosphate diphosphohydrolase 1) is also named as CD39,NTPDase 1,Ecto-ATPDase 1 and belongs to the GDA1/CD39 NTPase family. In the nervous system,it can hydrolyze ATP and other nucleotides to regulate purinergic neurotransmission.It is a noncovalent tetrameric protein and that detergent inhibition of enzymatic activity is caused by

Target Details

dissociation of ectoapyrase tetramers into monomers. And it is a 70- to 100- kDa protein that is heavily N-glycosylated. This protein has 6 glycosylation sites and 3 isoforms (58 kDa, 59 kDa and 34 kDa) produced by alternative splicing. The soluble isoform of CD39 (38-478 amino acid) locates to the extracellular part and this antibody can recognize the soluble form of CD39 (38-478aa) molecule.

UniProt: [P49961](#)

Application Details

Application Notes: IHC 1:50-1:100, ELISA 1:5000-1:10000

Restrictions: For Research Use only

Handling

Format: Liquid

Concentration: 1.5 mg/mL

Buffer: PBS with 0.05 % Sodium azide and 40 % Glycerol, pH 7.4

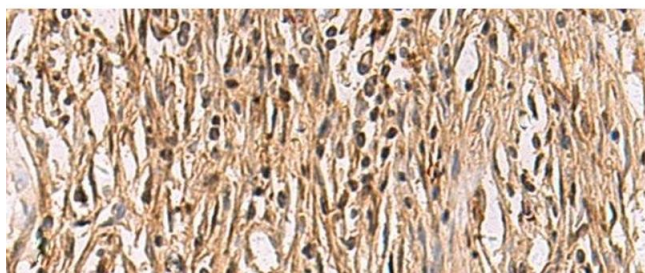
Preservative: Sodium azide

Precaution of Use: This product contains Sodium azide: a POISONOUS AND HAZARDOUS SUBSTANCE which should be handled by trained staff only.

Storage: -20 °C

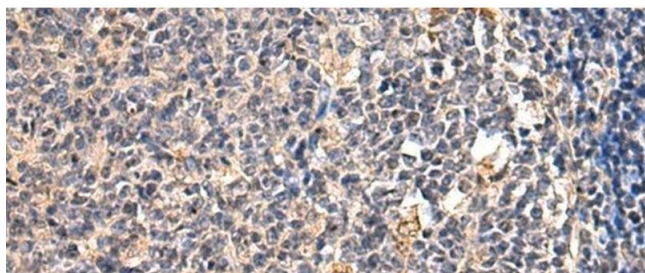
Storage Comment: Store at -20°C. Avoid freeze / thaw cycles.

Images



Immunohistochemistry (Paraffin-embedded Sections)

Image 1. Immunohistochemistry of paraffin-embedded Human colorectal cancer tissue using ENTPD1 Polyclonal Antibody at dilution of 1:60 (x200)



Immunohistochemistry (Paraffin-embedded Sections)

Image 2. Immunohistochemistry of paraffin-embedded Human tonsil tissue using ENTPD1 Polyclonal Antibody at dilution of 1:60(x200)