

Datasheet for ABIN7254421

anti-COX7C antibody**3** Images[Go to Product page](#)

Overview

Quantity:	200 µL
Target:	COX7C
Reactivity:	Human, Mouse, Rat
Host:	Rabbit
Clonality:	Polyclonal
Conjugate:	This COX7C antibody is un-conjugated
Application:	Western Blotting (WB), Immunohistochemistry (IHC), ELISA

Product Details

Immunogen:	Synthetic peptide of human COX7C
Isotype:	IgG
Characteristics:	Polyclonal Antibody
Purification:	Antigen affinity purification

Target Details

Target:	COX7C
Alternative Name:	COX7C (COX7C Products)
Background:	Cytochrome c oxidase (COX), the terminal component of the mitochondrial respiratory chain, catalyzes the electron transfer from reduced cytochrome c to oxygen. This component is a heteromeric complex consisting of 3 catalytic subunits encoded by mitochondrial genes and multiple structural subunits encoded by nuclear genes. The mitochondrially-encoded subunits

Target Details

function in electron transfer, and the nuclear-encoded subunits may function in the regulation and assembly of the complex.

Molecular Weight: Observed_MW: Refer to figures
Calculated_MW: 7 kDa

UniProt: [P15954](#)

Application Details

Application Notes: WB 1:500-1:2000, IHC 1:30-1:150, ELISA 1:2000-1:5000

Restrictions: For Research Use only

Handling

Format: Liquid

Concentration: 0.6 mg/mL

Buffer: PBS with 0.05 % Sodium azide and 40 % Glycerol, pH 7.4

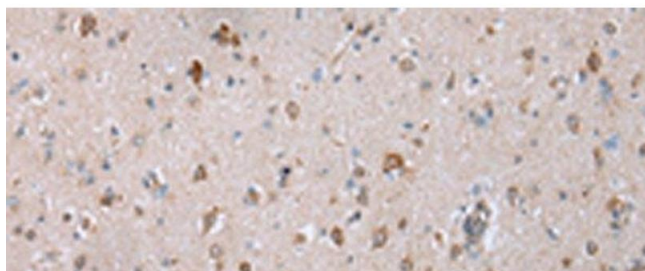
Preservative: Sodium azide

Precaution of Use: This product contains Sodium azide: a POISONOUS AND HAZARDOUS SUBSTANCE which should be handled by trained staff only.

Storage: -20 °C

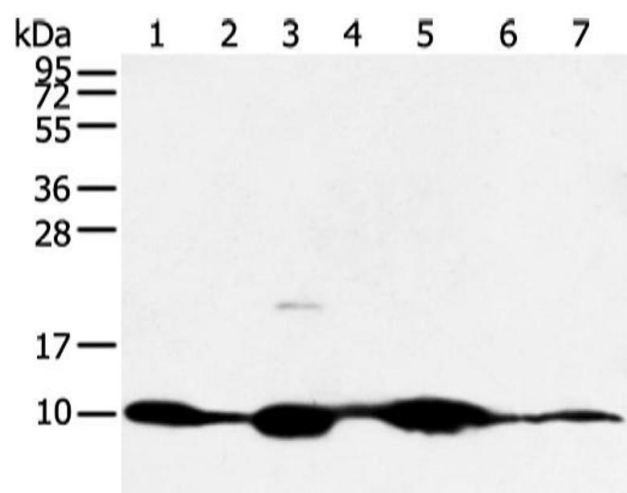
Storage Comment: Store at -20°C. Avoid freeze / thaw cycles.

Images



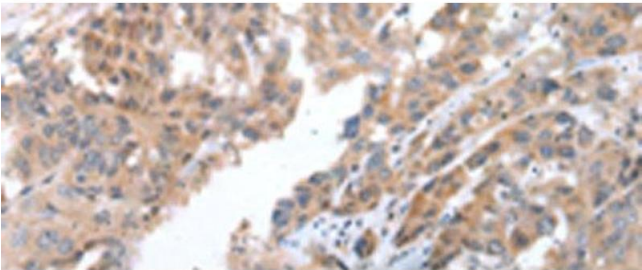
Immunohistochemistry (Paraffin-embedded Sections)

Image 1. Immunohistochemistry of paraffin-embedded Human brain tissue using COX7C Polyclonal Antibody at dilution of 1:40(x200)



Western Blotting

Image 2. Western blot analysis of Mouse muscle and human fetal muscle tissue mouse heart tissue and PC3 cell mouse kidney and small intestines tissue 231 cell using COX7C Polyclonal Antibody at dilution of 1:300



Immunohistochemistry (Paraffin-embedded Sections)

Image 3. Immunohistochemistry of paraffin-embedded Human breast cancer tissue using COX7C Polyclonal Antibody at dilution of 1:40(x200)