



[Go to Product page](#)

## Datasheet for ABIN7254430 anti-CLEC9A antibody

### 1 Image

#### Overview

Quantity:	200 µL
Target:	CLEC9A
Reactivity:	Human
Host:	Rabbit
Clonality:	Polyclonal
Conjugate:	This CLEC9A antibody is un-conjugated
Application:	Western Blotting (WB), ELISA

#### Product Details

Immunogen:	Synthetic peptide of human CLEC9A
Isotype:	IgG
Characteristics:	Polyclonal Antibody
Purification:	Antigen affinity purification

#### Target Details

Target:	CLEC9A
Alternative Name:	CLEC9A ( <a href="#">CLEC9A Products</a> )
Background:	CLEC9A is a group V C-type lectin-like receptor (CTLR) that functions as an activation receptor and is expressed on myeloid lineage cells. Flow cytometric, Western blot, and deglycosylation analyses showed surface expression of a glycosylated CLEC9A dimer of 40 and 45 kD under reducing conditions. The deglycosylated dimer was approximately 30 and 35 kD. RT-PCR

## Target Details

detected CLEC9A expression in most human tissues examined, with highest levels in brain, thymus, and spleen.

Molecular Weight: Observed\_MW: Refer to figures  
Calculated\_MW: 27 kDa

UniProt: [Q6UXN8](#)

## Application Details

Application Notes: WB 1:500-1:2000, ELISA 1:5000-1:10000

Restrictions: For Research Use only

## Handling

Format: Liquid

Concentration: 0.96 mg/mL

Buffer: PBS with 0.05 % Sodium azide and 40 % Glycerol, pH 7.4

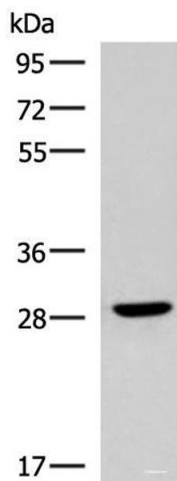
Preservative: Sodium azide

Precaution of Use: This product contains Sodium azide: a POISONOUS AND HAZARDOUS SUBSTANCE which should be handled by trained staff only.

Storage: -20 °C

Storage Comment: Store at -20°C. Avoid freeze / thaw cycles.

## Images



### Western Blotting

**Image 1.** Western blot analysis of Human fetal brain tissue lysate using CLEC9A Polyclonal Antibody at dilution of 1:800