

Datasheet for ABIN7254463

**anti-MAFA antibody**[Go to Product page](#)**1** Image

## Overview

Quantity:	200 µL
Target:	MAFA
Reactivity:	Human, Mouse
Host:	Rabbit
Clonality:	Polyclonal
Conjugate:	This MAFA antibody is un-conjugated
Application:	Western Blotting (WB), ELISA

## Product Details

Immunogen:	Synthetic peptide of human MAFA
Isotype:	IgG
Characteristics:	Polyclonal Antibody
Purification:	Antigen affinity purification

## Target Details

Target:	MAFA
Alternative Name:	MAFA ( <a href="#">MAFA Products</a> )
Background:	Members of the Maf family of basic region/leucine zipper (bZIP) transcription factors affect transcription in either a positive or negative fashion, depending on their particular protein partner and the context of the target promoter. c-Maf (Maf-2) and the closely related family members. MAFA acts as a transcriptional factor. Specifically binds the insulin enhancer element

## Target Details

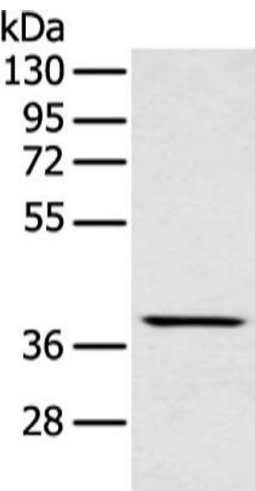
	RIPE3b and activates insulin gene expression. Cooperates synergistically with NEUROD1 and PDX1. Phosphorylation by GSK3 increases its transcriptional activity and is required for its oncogenic activity.
Molecular Weight:	Observed_MW: Refer to figures Calculated_MW: 37 kDa
UniProt:	<a href="#">Q8NHW3</a>
Pathways:	<a href="#">Hormone Transport</a>

## Application Details

Application Notes:	WB 1:500-1:2000, ELISA 1:5000-1:10000
Restrictions:	For Research Use only

## Handling

Format:	Liquid
Concentration:	1.2 mg/mL
Buffer:	PBS with 0.05 % Sodium azide and 40 % Glycerol, pH 7.4
Preservative:	Sodium azide
Precaution of Use:	This product contains Sodium azide: a POISONOUS AND HAZARDOUS SUBSTANCE which should be handled by trained staff only.
Storage:	-20 °C
Storage Comment:	Store at -20°C. Avoid freeze / thaw cycles.



Western Blotting

**Image 1.** Western blot analysis of Mouse muscle tissue using MAFA Polyclonal Antibody at dilution of 1:400