



[Go to Product page](#)

Datasheet for ABIN7254490

## anti-SLC4A3 antibody

### 2 Images

#### Overview

Quantity:	200 µL
Target:	SLC4A3
Reactivity:	Rat, Human, Mouse
Host:	Rabbit
Clonality:	Polyclonal
Conjugate:	This SLC4A3 antibody is un-conjugated
Application:	ELISA, Immunohistochemistry (IHC)

#### Product Details

Immunogen:	Synthetic peptide of human SLC4A3
Isotype:	IgG
Characteristics:	Polyclonal Antibody
Purification:	Antigen affinity purification

#### Target Details

Target:	SLC4A3
Alternative Name:	SLC4A3 ( <a href="#">SLC4A3 Products</a> )
Background:	The protein encoded by this gene is a plasma membrane anion exchange protein. The encoded protein has been found in brain, heart, kidney, small intestine, and lung.
UniProt:	<a href="#">P48751</a>

## Application Details

---

Application Notes: IHC 1:50-1:100, ELISA 1:5000-1:10000

---

Restrictions: For Research Use only

---

## Handling

---

Format: Liquid

---

Concentration: 0.78 mg/mL

---

Buffer: PBS with 0.05 % Sodium azide and 40 % Glycerol, pH 7.4

---

Preservative: Sodium azide

---

Precaution of Use: This product contains Sodium azide: a POISONOUS AND HAZARDOUS SUBSTANCE which should be handled by trained staff only.

---

Storage: -20 °C

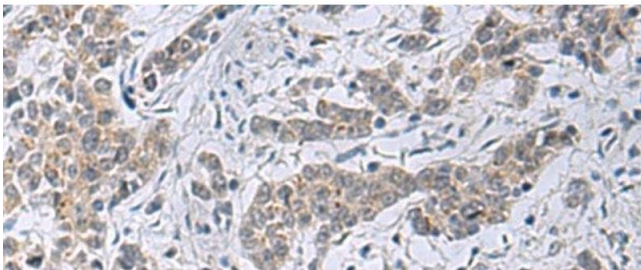
---

Storage Comment: Store at -20°C. Avoid freeze / thaw cycles.

---

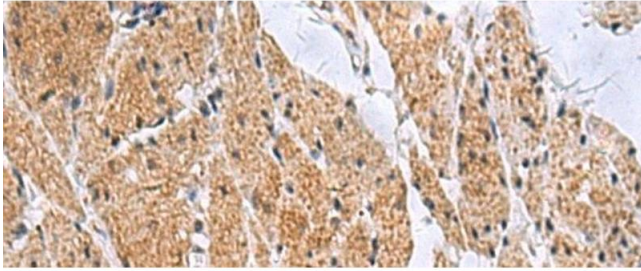
## Images

---



### Immunohistochemistry (Paraffin-embedded Sections)

**Image 1.** Immunohistochemistry of paraffin-embedded Human colorectal cancer tissue using SLC4A3 Polyclonal Antibody at dilution of 1:35(x200)



### Immunohistochemistry (Paraffin-embedded Sections)

**Image 2.** Immunohistochemistry of paraffin-embedded Human esophagus cancer tissue using SLC4A3 Polyclonal Antibody at dilution of 1:35(x200)