

Datasheet for ABIN7254544
anti-ARHGDIB antibody

3 Images

[Go to Product page](#)

Overview

| | |
|--------------|--|
| Quantity: | 200 µL |
| Target: | ARHGDIB |
| Reactivity: | Human, Mouse |
| Host: | Rabbit |
| Clonality: | Polyclonal |
| Conjugate: | This ARHGDIB antibody is un-conjugated |
| Application: | Western Blotting (WB), ELISA, Immunohistochemistry (IHC) |

Product Details

| | |
|------------------|------------------------------------|
| Immunogen: | Synthetic peptide of human ARHGDIB |
| Isotype: | IgG |
| Characteristics: | Polyclonal Antibody |
| Purification: | Antigen affinity purification |

Target Details

| | |
|-------------------|--|
| Target: | ARHGDIB |
| Alternative Name: | ARHGDIB (ARHGDIB Products) |
| Background: | ARHGDIB,also known as RhoGDI2,is a conserved member of the RhoGDI family and plays an important role in cell migrations. It regulates the GDP/GTP exchange reaction of the Rho proteins by inhibiting the dissociation of GDP from them,and the subsequent binding of GTP to them. It is mainly in hematopoietic,endothelial,and epithelial cells. It has been linked to |

Target Details

tumorigenesis and metastasis. RhoGDI2 expression is downregulated in several cancer types, such as bladder, lung and lymphoma, but is upregulated in prostate and gastric cancer.

Molecular Weight: Observed_MW: Refer to figures
Calculated_MW: 23 kDa

UniProt: [P52566](#)

Pathways: [Caspase Cascade in Apoptosis](#)

Application Details

Application Notes: WB 1:500-1:2000, IHC 1:25-1:100, ELISA 1:5000-1:10000

Restrictions: For Research Use only

Handling

Format: Liquid

Concentration: 1 mg/mL

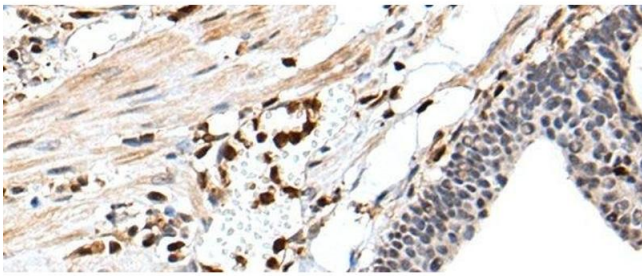
Buffer: PBS with 0.05 % Sodium azide and 40 % Glycerol, pH 7.4

Preservative: Sodium azide

Precaution of Use: This product contains Sodium azide: a POISONOUS AND HAZARDOUS SUBSTANCE which should be handled by trained staff only.

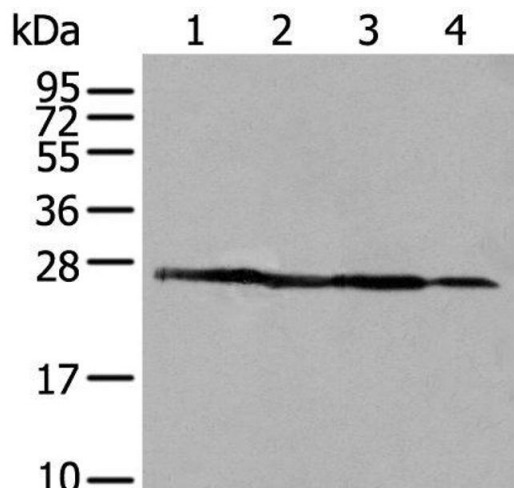
Storage: -20 °C

Storage Comment: Store at -20°C. Avoid freeze / thaw cycles.



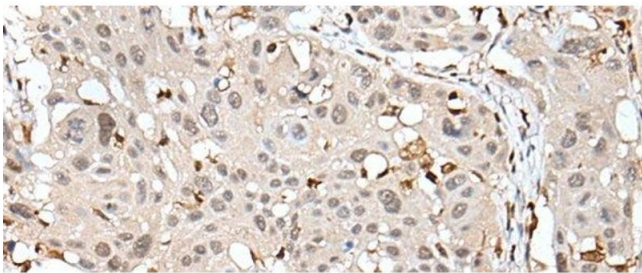
Immunohistochemistry (Paraffin-embedded Sections)

Image 1. Immunohistochemistry of paraffin-embedded Human gastric cancer tissue using ARHGDIB Polyclonal Antibody at dilution of 1:35(x200)



Western Blotting

Image 2. Western blot analysis of 293T A431 and HepG2 cell lysates using ARHGDIB Polyclonal Antibody at dilution of 1:500



Immunohistochemistry (Paraffin-embedded Sections)

Image 3. Immunohistochemistry of paraffin-embedded Human esophagus cancer tissue using ARHGDIB Polyclonal Antibody at dilution of 1:35(x200)