

Datasheet for ABIN7254577  
**anti-MEF2BNB antibody**[Go to Product page](#)

## 1 Image

## Overview

Quantity:	200 µL
Target:	MEF2BNB
Reactivity:	Human
Host:	Rabbit
Clonality:	Polyclonal
Conjugate:	This MEF2BNB antibody is un-conjugated
Application:	ELISA, Immunohistochemistry (IHC)

## Product Details

Immunogen:	Synthetic peptide of human BORCS8
Isotype:	IgG
Characteristics:	Polyclonal Antibody
Purification:	Antigen affinity purification

## Target Details

Target:	MEF2BNB
Alternative Name:	BORCS8 ( <a href="#">MEF2BNB Products</a> )
Background:	BORCS8, also known as BORCS8, the gene represents numerous read-through transcripts that span geneID:729991 and 100271849. Many read-through transcripts are predicted to be nonsense-mediated decay (NMD) candidates, and are thought to be non-coding. Some transcripts are predicted to be capable of translation reinitiation at a downstream AUG, resulting

## Target Details

in expression of at least one isoform of myocyte enhancer factor 2B (MEF2B) from this read-through locus.

UniProt: [Q96FH0](#)

## Application Details

Application Notes: IHC 1:35-1:200, ELISA 1:5000-1:10000

Restrictions: For Research Use only

## Handling

Format: Liquid

Concentration: 1.2 mg/mL

Buffer: PBS with 0.05 % Sodium azide and 40 % Glycerol, pH 7.4

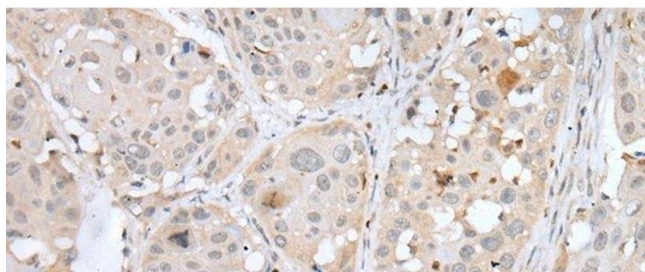
Preservative: Sodium azide

Precaution of Use: This product contains Sodium azide: a POISONOUS AND HAZARDOUS SUBSTANCE which should be handled by trained staff only.

Storage: -20 °C

Storage Comment: Store at -20°C. Avoid freeze / thaw cycles.

## Images



### Immunohistochemistry (Paraffin-embedded Sections)

**Image 1.** Immunohistochemistry of paraffin-embedded Human esophagus cancer tissue using BORCS8 Polyclonal Antibody at dilution of 1:50(x200)