



Datasheet for ABIN7254580

anti-MOG antibody

2 Images



[Go to Product page](#)

Overview

Quantity:	200 µL
Target:	MOG
Reactivity:	Human, Mouse, Rat
Host:	Rabbit
Clonality:	Polyclonal
Conjugate:	This MOG antibody is un-conjugated
Application:	Western Blotting (WB), Immunohistochemistry (IHC), ELISA

Product Details

Immunogen:	Synthetic peptide of human MOG
Isotype:	IgG
Characteristics:	Polyclonal Antibody
Purification:	Antigen affinity purification

Target Details

Target:	MOG
Alternative Name:	MOG (MOG Products)
Background:	The product of this gene is a membrane protein expressed on the oligodendrocyte cell surface and the outermost surface of myelin sheaths. Due to this localization, it is a primary target antigen involved in immune-mediated demyelination. This protein may be involved in completion and maintenance of the myelin sheath and in cell-cell communication. Alternatively

Target Details

spliced transcript variants encoding different isoforms have been identified.

Molecular Weight: Observed_MW: Refer to figures
Calculated_MW: 28 kDa

UniProt: [Q16653](#)

Application Details

Application Notes: WB 1:500-1:2000, IHC 1:25-1:100, ELISA 1:2000-1:5000

Restrictions: For Research Use only

Handling

Format: Liquid

Concentration: 0.6 mg/mL

Buffer: PBS with 0.05 % Sodium azide and 40 % Glycerol, pH 7.4

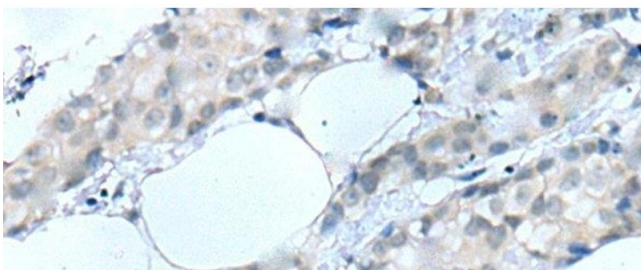
Preservative: Sodium azide

Precaution of Use: This product contains Sodium azide: a POISONOUS AND HAZARDOUS SUBSTANCE which should be handled by trained staff only.

Storage: -20 °C

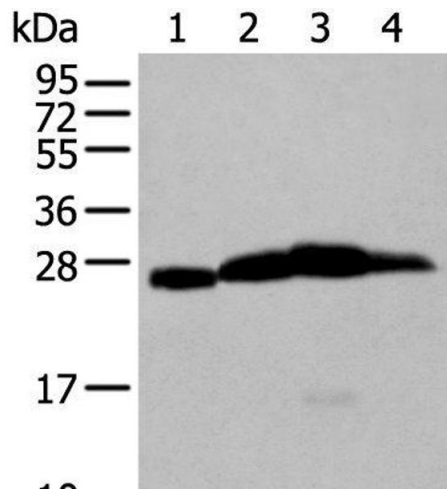
Storage Comment: Store at -20°C. Avoid freeze / thaw cycles.

Images



Immunohistochemistry (Paraffin-embedded Sections)

Image 1. Immunohistochemistry of paraffin-embedded Human breast cancer tissue using MOG Polyclonal Antibody at dilution of 1:25(x200)



Western Blotting

Image 2. Western blot analysis of Mouse brain tissue Rat brain tissue Human cerebrum tissue Human cerebella tissue lysates using MOG Polyclonal Antibody at dilution of 1:250