

Datasheet for ABIN7254628

anti-MYL12B antibody

3 Images

[Go to Product page](#)

Overview

Quantity:	200 µL
Target:	MYL12B
Reactivity:	Human, Mouse, Rat
Host:	Rabbit
Clonality:	Polyclonal
Conjugate:	This MYL12B antibody is un-conjugated
Application:	Western Blotting (WB), ELISA, Immunohistochemistry (IHC)

Product Details

Immunogen:	Synthetic peptide of human MYL12B
Isotype:	IgG
Characteristics:	Polyclonal Antibody
Purification:	Antigen affinity purification

Target Details

Target:	MYL12B
Alternative Name:	MYL12B (MYL12B Products)
Background:	The activity of nonmuscle myosin II (see MYH9, MIM 160775) is regulated by phosphorylation of a regulatory light chain, such as MRLC2. This phosphorylation results in higher MgATPase activity and the assembly of myosin II filaments

Target Details

Molecular Weight: Observed_MW: Refer to figures
Calculated_MW: 20 kDa

UniProt: [O14950](#)

Pathways: [Feeding Behaviour](#)

Application Details

Application Notes: WB 1:500-1:2000, IHC 1:30-1:150, ELISA 1:5000-1:10000

Restrictions: For Research Use only

Handling

Format: Liquid

Concentration: 0.5 mg/mL

Buffer: PBS with 0.05 % Sodium azide and 40 % Glycerol, pH 7.4

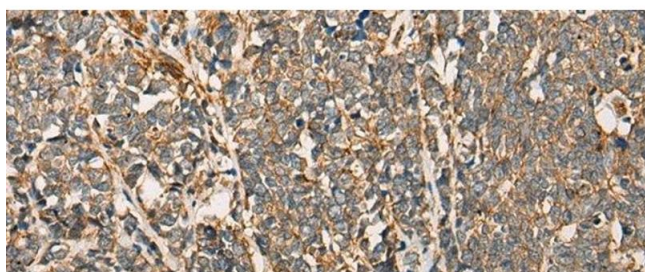
Preservative: Sodium azide

Precaution of Use: This product contains Sodium azide: a POISONOUS AND HAZARDOUS SUBSTANCE which should be handled by trained staff only.

Storage: -20 °C

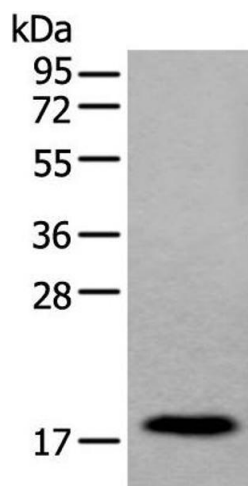
Storage Comment: Store at -20°C. Avoid freeze / thaw cycles.

Images



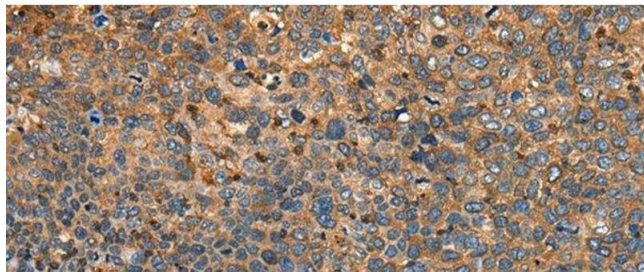
Immunohistochemistry (Paraffin-embedded Sections)

Image 1. Immunohistochemistry of paraffin-embedded Human lung cancer tissue using MYL12B Polyclonal Antibody at dilution of 1:25(x200)



Western Blotting

Image 2. Western blot analysis of Human urinary bladder tissue lysate using MYL12B Polyclonal Antibody at dilution of 1:250



Immunohistochemistry (Paraffin-embedded Sections)

Image 3. Immunohistochemistry of paraffin-embedded Human cervical cancer tissue using MYL12B Polyclonal Antibody at dilution of 1:25(x200)