

Datasheet for ABIN725465  
**anti-PPP1CB antibody (AA 155-250)**[Go to Product page](#)

## 2 Images

## Overview

Quantity:	100 µL
Target:	PPP1CB
Binding Specificity:	AA 155-250
Reactivity:	Rat
Host:	Mouse
Clonality:	Polyclonal
Conjugate:	This PPP1CB antibody is un-conjugated
Application:	ELISA, Immunohistochemistry (Paraffin-embedded Sections) (IHC (p)), Immunofluorescence (Cultured Cells) (IF (cc)), Immunofluorescence (Paraffin-embedded Sections) (IF (p)), Immunohistochemistry (Frozen Sections) (IHC (fro))

## Product Details

Immunogen:	KLH conjugated synthetic peptide derived from human PP-1B
Isotype:	IgG
Cross-Reactivity:	Rat
Predicted Reactivity:	Human,Mouse,Cow,Horse,Rabbit
Purification:	Purified by Protein A.

## Target Details

Target:	PPP1CB
---------	--------

## Target Details

Alternative Name:	PP-1B ( <a href="#">PPP1CB Products</a> )
Background:	<p>Synonyms: PP1B, PP-1B, PPP1CD, PP1beta, HEL-S-8p, Serine/threonine-protein phosphatase PP1-beta catalytic subunit, PPP1CB</p> <p>Background: Protein phosphatase that associates with over 2 regulatory proteins to form highly specific holoenzymes which dephosphorylate hundreds of biological targets. Protein phosphatase (PP1) is essential for cell division, it participates in the regulation of glycogen metabolism, muscle contractility and protein synthesis. Involved in regulation of ionic conductances and long-term synaptic plasticity. Component of the PTW/PP1 phosphatase complex, which plays a role in the control of chromatin structure and cell cycle progression during the transition from mitosis into interphase. In balance with CSNK1D and CSNK1E, determines the circadian period length, through the regulation of the speed and rhythmicity of PER1 and PER2 phosphorylation. May dephosphorylate CSNK1D and CSNK1E.</p>
Gene ID:	5500
UniProt:	<a href="#">P62140</a>
Pathways:	<a href="#">M Phase</a> , <a href="#">Cellular Glucan Metabolic Process</a> , <a href="#">Regulation of Carbohydrate Metabolic Process</a> , <a href="#">Lipid Metabolism</a>

## Application Details

Application Notes:	ELISA 1:500-1000 IHC-P 1:200-400 IHC-F 1:100-500 IF(IHC-P) 1:50-200 IF(IHC-F) 1:50-200 IF(ICC) 1:50-200
Restrictions:	For Research Use only

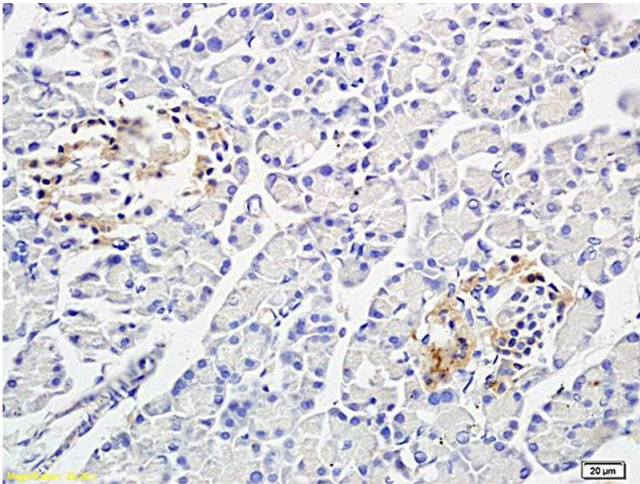
## Handling

Format:	Liquid
Concentration:	1 µg/µL
Buffer:	0.01M TBS( pH 7.4) with 1 % BSA, 0.02 % Proclin300 and 50 % Glycerol.
Preservative:	ProClin
Precaution of Use:	This product contains ProClin: a POISONOUS AND HAZARDOUS SUBSTANCE, which should be

Handling

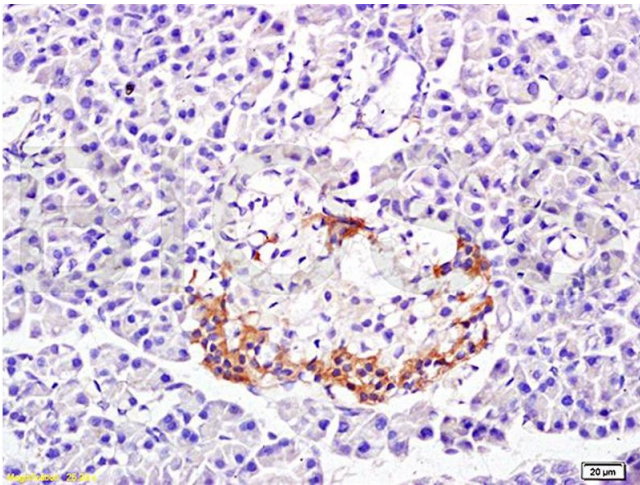
	handled by trained staff only.
Storage:	4 °C,-20 °C
Storage Comment:	Shipped at 4°C. Store at -20°C for one year. Avoid repeated freeze/thaw cycles.
Expiry Date:	12 months

Images



Immunohistochemistry

**Image 1.** Formalin-fixed and paraffin embedded: rat pancreas tissue labeled with Anti-PP-1B Polyclonal Antibody (ABIN725465), Unconjugated at 1:300 followed by conjugation to the secondary antibody and DAB staining



Immunohistochemistry

**Image 2.** Formalin-fixed and paraffin embedded: rat pancreas tissue labeled with Anti-PP-1B Polyclonal Antibody (ABIN725465), Unconjugated at 1:300 followed by conjugation to the secondary antibody and DAB staining