

Datasheet for ABIN7254706

**anti-BCL2L2 antibody****2** Images[Go to Product page](#)

## Overview

Quantity:	200 µL
Target:	BCL2L2
Reactivity:	Human, Mouse
Host:	Rabbit
Clonality:	Polyclonal
Conjugate:	This BCL2L2 antibody is un-conjugated
Application:	Western Blotting (WB), Immunohistochemistry (IHC), ELISA

## Product Details

Immunogen:	Synthetic peptide of human BCL2L2
Isotype:	IgG
Characteristics:	Polyclonal Antibody
Purification:	Antigen affinity purification

## Target Details

Target:	BCL2L2
Alternative Name:	BCL2L2 ( <a href="#">BCL2L2 Products</a> )
Background:	<p>This gene encodes a member of the BCL-2 protein family. The proteins of this family form hetero- or homodimers and act as anti- and pro-apoptotic regulators. Expression of this gene in cells has been shown to contribute to reduced cell apoptosis under cytotoxic conditions.</p> <p>Studies of the related gene in mice indicated a role in the survival of NGF- and BDNF-dependent</p>

## Target Details

neurons. Mutation and knockout studies of the mouse gene demonstrated an essential role in adult spermatogenesis. Alternative splicing results in multiple transcript variants. Read-through transcription also exists between this gene and the neighboring downstream PABPN1 (poly(A) binding protein, nuclear 1) gene.

Molecular Weight: Observed\_MW: Refer to figures  
Calculated\_MW: 21 kDa

UniProt: [Q92843](#)

## Application Details

Application Notes: WB 1:500-1:2000, IHC 1:30-1:150, ELISA 1:5000-1:10000

Restrictions: For Research Use only

## Handling

Format: Liquid

Concentration: 0.8 mg/mL

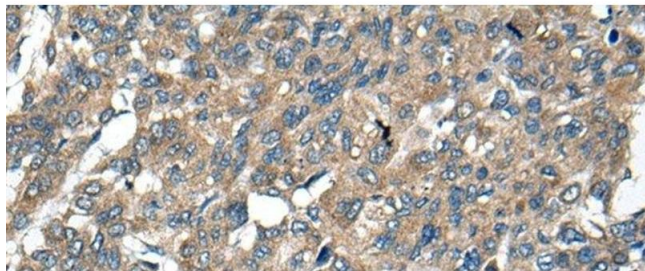
Buffer: PBS with 0.05 % Sodium azide and 40 % Glycerol, pH 7.4

Preservative: Sodium azide

Precaution of Use: This product contains Sodium azide: a POISONOUS AND HAZARDOUS SUBSTANCE which should be handled by trained staff only.

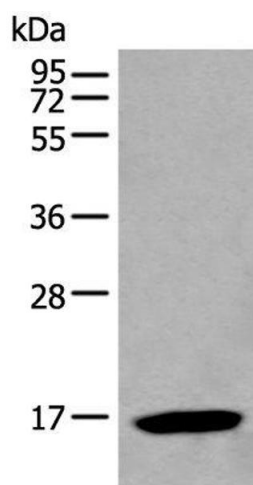
Storage: -20 °C

Storage Comment: Store at -20°C. Avoid freeze / thaw cycles.



#### Immunohistochemistry (Paraffin-embedded Sections)

**Image 1.** Immunohistochemistry of paraffin-embedded Human liver cancer tissue using BCL2L2 Polyclonal Antibody at dilution of 1:40(x200)



#### Western Blotting

**Image 2.** Western blot analysis of HL-60 cell lysate using BCL2L2 Polyclonal Antibody at dilution of 1:500